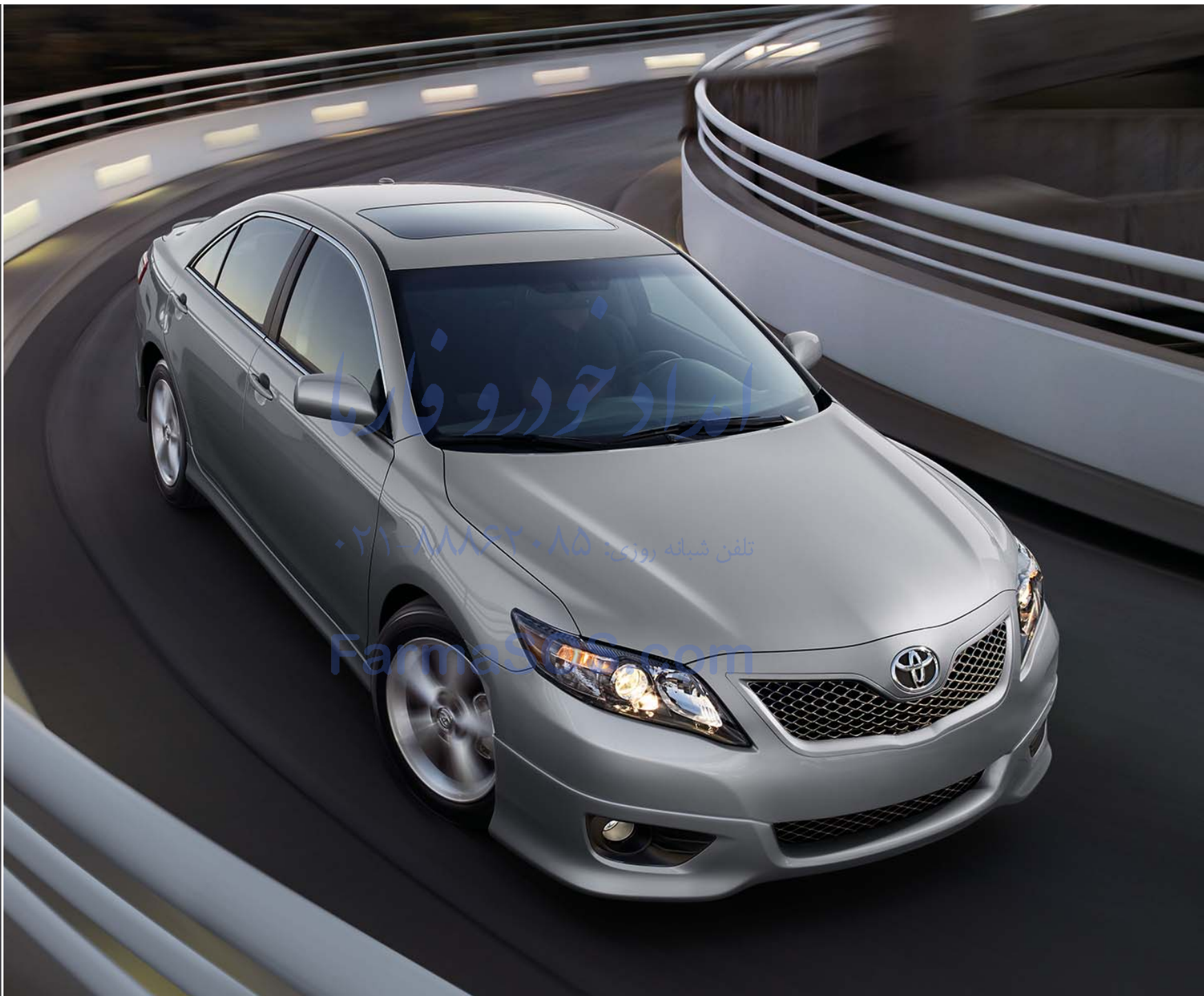




2011 CAMRY



امداد خودرو فارس

تلفن شبانه روزی: ۰۲۱-۸۸۸۶۲۰۸۵

Farmasoft.com

Thanks, America. Once again, you've made Camry the best-selling car.

Plenty of research tools can help you decide which car to buy, but this one's foolproof: the annual list of America's best-selling cars.¹ At the top, you'll find Toyota Camry. Why do more people make our Camry their car of choice? Because nothing else combines Toyota's reliability, longevity, fuel economy and value for the money with Camry's bold, confident sense of style. Really, the question isn't which car, it's which Camry model: Camry, LE, SE, XLE or Hybrid. The 2011 Toyota Camry. **Moving Forward.**

1. Based on manufacturers' passenger car sales data. Includes Camry Solara.



Hybrid shown in Blue Whisper Mica with available Upgrade Package and fog lamps; XLE shown in Blue Ribbon Metallic with available Smart Key System!

1. See footnote 24 in Disclaimers section.

Camry SE

With Camry SE, Toyota engineers put the focus on enhancing the performance feel of Camry: A sport-tuned suspension lowers the ride height. Under the rear bumper, the chrome-tipped dual exhaust clues you in to what's under the hood: 268 horsepower from the available 3.5-liter V6, or 179 horsepower from the SE's standard 2.5-liter DOHC 16-valve 4-cylinder engine. And thanks to dual VVT-i – that's short for Variable Valve Timing with intelligence – the power from these engines is delivered with remarkable efficiency. VVT-i adjusts the timing of the valves independently to ensure an optimum balance of power and precision.



SMART KEY SYSTEM^{1,2}

With the available Smart Key System with Push Button Start, Camry can be unlocked and started by having the Smart Key in the driver's pocket or purse. A proximity sensor in the car door and a radio pulse generator in the key housing form the electronic access and authorization system that makes it all work.

1. See footnote 24 in Disclaimers section. 2. Automatic transmission only.



SE shown in Magnetic Gray Metallic with available Smart Key System¹ and rear spoiler.

1. See footnote 24 in Disclaimers section.



XLE shown in Black with available Smart Key System¹ and accessory rear spoiler.

1. See footnote 24 in Disclaimers section.

Camry XLE

Camry XLE uses its striking lines and bold look to express the essence of Toyota Camry at its best. And XLE's stylish exterior conceals a spacious interior designed to surround both driver and passengers with a host of advanced features.



MOONROOF

Keep an eye on the beauty outside through Camry XLE's standard moonroof. It's also available on LE, SE and Hybrid models as part of a package that includes a sliding sunshade, dual sun visors with illuminated vanity mirrors and rear-seat reading lights.



XLE V6 shown in Ash leather with available voice-activated touch-screen DVD navigation system¹ and heated front seats.

The best
of everything.

Considering all the standard features found on Camry XLE, it would be more appropriate to think “high” standards. Take the XLE’s dual zone automatic climate control with Plasmacluster™² ionizer, for example. It’s just one extraordinary touch that makes Camry XLE such an exceptional sedan. An auxiliary audio jack, wood-grain-style interior trim and HomeLink®³ universal transceiver are a few additional features that define an interior designed with your total comfort in mind.

1. See footnote 30 in Disclaimers section. 2. See footnote 27 in Disclaimers section. 3. HomeLink® is a registered trademark of Johnson Controls, Inc.



XLE V6 shown in Ash leather with available voice-activated touch-screen DVD navigation system,¹ heated front seats and Smart Key System² with Push Button Start.



HEATED SEATS

On XLE, heated front seats³ are an available option. At the touch of a button, the driver or front passenger can summon soothing warmth to their seat, quickly taking the chill off.

PLASMACLUSTER™⁴

Exclusive to XLE and Hybrid grades, the Plasmacluster™ ionizer helps enhance the air quality inside the cabin. The Plasmacluster™ generates positive ions, which exist in nature and are harmless to humans. As a result, fewer germs are emitted into the air of the cabin.

1. See footnote 30 in Disclaimers section. 2. See footnote 24 in Disclaimers section. 3. Requires available leather-trimmed seats. 4. See footnote 27 in Disclaimers section.

Travel in confidence.

With a host of available technologies, Camry can help you enjoy trips of any length, from in-town errands to cross-country vacations. And while the technology behind these features is sophisticated, the result is quite simple: a confident driver.

XM® RADIO¹

If you're choosing Camry, you're all about getting things just the way you like them. So why listen to any old broadcast? Available XM® Radio offers 170-plus channels of music, news and sports, plus it comes with a 90-day trial subscription.

JBL® AUDIO SYSTEM

An available 8-speaker JBL® audio system lets you get your music from many sources. There's AM/FM, of course, and a 6-disc in-dash CD changer. It also has an integrated satellite radio, an auxiliary audio jack, streaming audio via Bluetooth^{®2} and the USB³ port.



↑ 1 2 ↓



↑ 3 4 ↓

1 BUILT-IN VOICE-ACTIVATED DVD NAVIGATION^{4,5}

If you like the rush of driving Camry SE, or the plush treatment of XLE, the available touch-screen DVD navigation system is your ideal traveling companion. It's voice-activated to make a convenient tool even easier to use.

2 BLUETOOTH® WIRELESS TECHNOLOGY

Camry offers available Bluetooth® wireless technology so advanced, it even lets you stream music from your compatible stereo Bluetooth® music devices for playback through the available audio system's speakers.

3 USB PORT

Play your personal music files with ease. There's an available USB port on the 2011 Camry that's ready and waiting for your flash drive. There's also an auxiliary audio jack.

4 BACKUP CAMERA^{6,7}

When backing up, the area behind the vehicle visible to the camera is displayed on the available touch-screen of the voice-activated DVD navigation system.

1. See footnote 11 in Disclaimers section. 2. See footnote 29 in Disclaimers section. 3. See footnote 28 in Disclaimers section. 4. See footnote 30 in Disclaimers section. 5. Available on SE with automatic transmission, XLE and Hybrid only. 6. See footnote 31 in Disclaimers section. 7. Requires DVD navigation system. Available on SE with automatic transmission, XLE and Hybrid only.



Ditto.



Confidence also comes from knowing you're surrounded by a high level of safety engineering. Which is why every 2011 Camry comes standard with the Toyota Star Safety System™¹ This integration of advanced safety features serves the fundamental aim of assisting drivers to avoid accidents in the first place. The Star Safety System™ includes Vehicle Stability Control (VSC)² with off switch;³ Traction Control (TRAC), Anti-lock Brake System (ABS) with Electronic Brake-force Distribution (EBD), Brake Assist (BA)⁴ and Smart Stop Technology (SST)⁵



Photo not intended to replicate actual inflated airbags.



SEVEN AIRBAGS⁶

Every 2011 Camry comes with an Advanced Airbag System that includes seven airbags: advanced airbags for the driver and front passenger, front and rear side curtain airbags, front seat-mounted side airbags for the driver and front passenger, and a driver's knee airbag.

DIRECT TIRE PRESSURE MONITOR SYSTEM (TPMS)⁷

A low-pressure tire may seem innocent enough, but it can lead to big trouble. Camry's Direct Tire Pressure Monitor System (TPMS) provides early notification of critically low tire pressure.

1. Hybrid includes Vehicle Dynamics Integrated Management (VDIM). 2. See footnote 17 in Disclaimers section. 3. Not available on Hybrid. 4. See footnote 16 in Disclaimers section. 5. See footnote 34 in Disclaimers section. 6. See footnote 35 in Disclaimers section. 7. See footnote 36 in Disclaimers section.



LE shown in Sandy Beach Metallic with available 16-in. alloy wheels.

Efficiency Expert.

Camry offers a 2.5-liter 4-cylinder engine that gets an EPA-estimated 22 city/33 highway mpg rating.¹ To bring more power to the party — up to 179 horsepower in the Camry SE — the engine uses dual Variable Valve Timing with intelligence (VVT-i). The available 3.5-liter V6 also applies dual VVT-i to help increase the power and torque placed at your disposal. Combined with the 6-speed automatic transmission with sequential shift, it takes the experience of driving Camry to new levels of driving pleasure.



V6 ENGINE AND VVT-i

On Camry LE, SE and XLE, the available 3.5-liter DOHC 24-valve dual VVT-i V6 engine pumps out an exhilarating 268 horsepower.

DUAL VARIABLE VALVE TIMING WITH INTELLIGENCE (VVT-i)

Dual Variable Valve Timing with intelligence, or VVT-i, constantly adjusts the valve timing to meet specific driving conditions and deliver optimum performance, fuel economy and lower emissions over a variety of engine speeds. At low engine speeds, the intake valve timing is set to open after the exhaust valve has already closed. At higher speeds, the intake valve opening is advanced to overlap with the exhaust valve to promote efficient cylinder filling.



6-SPEED AUTOMATIC TRANSMISSION WITH SEQUENTIAL SHIFT

Camry's available 6-speed automatic transmission selects the precise moment to seamlessly shift from one gear to another. Or the driver can take a more hands-on approach. A sequential shift feature lets the driver manually select gear changes: a nudge of the shift lever toward the "+" sign puts the transmission in a higher gear, while a move back to the "-" sign shifts the transmission into a lower gear.

4-CYLINDER ENGINE AND VVT-i

The 4-cylinder Camry, LE and XLE have a 2.5-liter 169-horsepower DOHC 16-valve engine with dual Variable Valve Timing with intelligence (VVT-i) that gives you the responsive performance you need on the road, while maintaining fuel efficiency. And the 4-cylinder Camry SE cranks out 179 horsepower. Plus, the 4-cylinder comes with a 6-speed manual² or available automatic transmission.

1. 2011 EPA-estimated mileage with manual transmission. Actual mileage will vary. 2. Not available on XLE.



Hybrid shown in Aloe Green Metallic with available Upgrade Package, fog lamps and moonroof.

Camry Hybrid

Behind its bold face, featuring an exclusive design for the grille, bumper and headlamps, Camry Hybrid uses technology called Hybrid Synergy Drive® to place it among the leaders of high fuel efficiency and clean-air consciousness. In fact, Camry Hybrid garners a 35 mpg highway rating¹ and produces significantly fewer smog-forming emissions compared to the average new vehicle. And it does this with all the style and performance, all the reliability and dependability, that Toyota Camry is famous for.

POWER CONTROL UNIT

Part of the Hybrid Synergy Drive® Power Control Unit is an inverter that transforms direct current supplied by the battery to alternating current used by the system to turn the electric motor and for use in the generator.

ECO DRIVE LEVEL DISPLAY

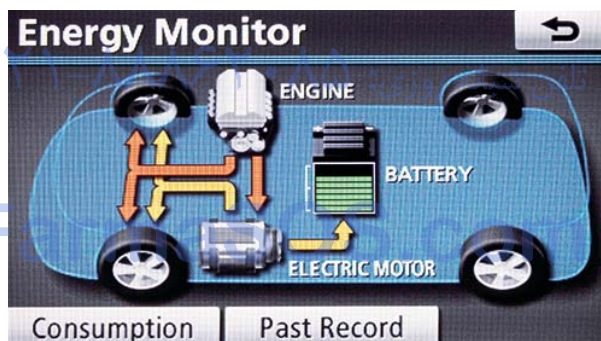
On the Eco Drive Level display, Optitron gauges, specially lighted for easy reading even in daylight, provide current fuel economy information while driving.

ENERGY MONITOR

The available Multi-Information Display keeps you continuously apprised of the Hybrid Synergy Drive® energy flow and its management.

ECO COOL

During heating and cooling, limiting the number of times the engine starts or the electric compressor runs helps reduce emissions and power consumption while improving fuel economy.



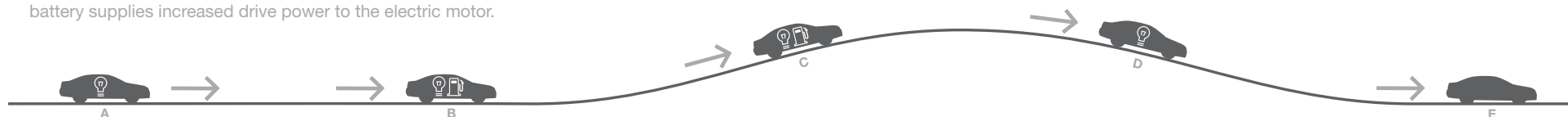
A STARTING — From initial light or moderate acceleration to low speeds, Camry Hybrid is powered solely by a high-torque electric motor.²

B NORMAL RUNNING — In normal driving conditions it runs on the electric motor and is assisted by the gasoline engine as needed.

C FULL ACCELERATION — During heavy acceleration, the gasoline engine is used while the battery supplies increased drive power to the electric motor.

D DECELERATION/BRAKING — When slowing, the gasoline engine shuts off and the electric motor converts momentum into electricity, storing it in the battery.

E STOPPING — When Camry Hybrid comes to a stop, its gasoline engine shuts off to conserve fuel and reduce emissions.³



1. 2011 EPA-estimated mileage. Actual mileage will vary. 2. Gasoline engine utilized for acceleration on cold starts and full acceleration. 3. The preceding is based on a "likely scenario" for optimal driving conditions.

COMBINATIONS

COLOR



BLACK



BLUE RIBBON METALLIC



SPRUCE MICA^{1, 2}



ALOE GREEN METALLIC^{1, 2, 3}



BARCELONA RED METALLIC¹



SANDY BEACH METALLIC^{2, 3}



MAGNETIC GRAY METALLIC¹



CLASSIC SILVER METALLIC⁴



SUPER WHITE

امداد خودرو فارما

WHEEL



Camry and LE standard 16-in. steel wheel with full wheel cover



LE available 16-in. 7-spoke alloy wheel



SE standard 17-in. 5-spoke machine-finished alloy wheel



XLE standard 16-in. 10-spoke alloy wheel

ACCESSORIES

Add a personal touch to your Camry with Genuine Toyota accessories. Some accessories may not be available in all regions of the country. See your Toyota dealer for details.

Ashtray cup
BLU Logic® Hands Free System⁵
Body side moldings
Cargo mat
Cargo net
Cargo tote
Cargo tray
Carpet floor mats⁶
Doorsill enhancements
Emergency assistance kit

Exhaust tip
First aid kit
Hybrid graphics
Interface kit⁷ for iPod®
Molded dash appliqué
Mudguards
Paint protection film
Rear bumper appliqué
Rear-seat DVD entertainment system
Rear spoiler

Remote engine starter
Sport pedal covers⁹
Sport shifter knob⁹
TRD sport exhaust
VIP RS3200 Plus security system¹⁰
Wheel locks
XM® Radio¹¹
16-in. Liquid Metal alloy wheels
18-in. TRD 10-spoke alloy wheels¹²



Body side moldings



Rear-seat DVD entertainment system



Rear spoiler

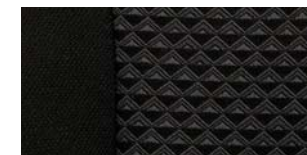
FABRIC/LEATHER



Camry and LE fabric in Ash



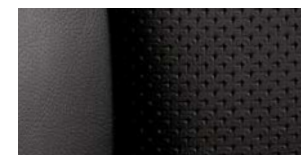
Camry and LE fabric in Bisque



SE fabric in Dark Charcoal



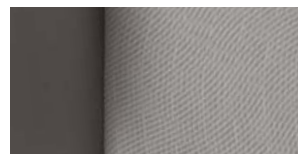
SE fabric in Ash



SE available leather in Dark Charcoal



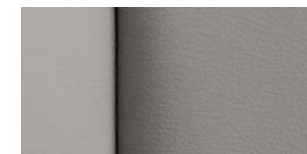
SE available leather in Ash



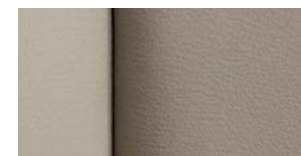
XLE fabric¹³ in Ash



XLE fabric¹³ in Bisque



XLE available leather¹⁴ in Ash



XLE available leather¹⁴ in Bisque

See numbered footnotes in Disclaimers section.

SPECIFICATIONS

MECHANICAL/PERFORMANCE	CAMRY, LE 4-CYLINDER	LE V6	SE 4-CYLINDER	SE V6	XLE 4-CYLINDER	XLE V6
Engine	2.5-liter 4-cylinder DOHC 16-valve dual VVT-i; 169 hp ¹⁵ @ 6000 rpm; 167 lb.-ft. ¹⁵ @ 4100 rpm	3.5-liter V6 DOHC 24-valve dual VVT-i; 268 hp @ 6200 rpm; 248 lb.-ft. @ 4700 rpm	2.5-liter 4-cylinder DOHC 16-valve dual VVT-i; 179 hp @ 6000 rpm; 171 lb.-ft. @ 4100 rpm	3.5-liter V6 DOHC 24-valve dual VVT-i; 268 hp @ 6200 rpm; 248 lb.-ft. @ 4700 rpm	2.5-liter 4-cylinder DOHC 16-valve dual VVT-i; 169 hp ¹⁵ @ 6000 rpm; 167 lb.-ft. ¹⁵ @ 4100 rpm	3.5-liter V6 DOHC 24-valve dual VVT-i; 268 hp @ 6200 rpm; 248 lb.-ft. @ 4700 rpm
Ignition	Electronic, with Toyota Direct Ignition (TDI)					
Transmission	6-speed manual overdrive	NA	Standard	NA	NA	NA
6-speed Electronically Controlled automatic overdrive Transmission with intelligence and sequential shift (ECT-i)	Available	Standard	Available	Standard	Standard	Standard
Drivetrain	Front-wheel drive					
Body construction	Unitized body with front and rear anti-vibration sub-frames					
Suspension	MacPherson strut front suspension with gas-filled shock absorbers and stabilizer bar; dual-link independent MacPherson strut rear suspension with gas-filled shock absorbers and stabilizer bar (SE adds sport-tuned shock absorbers and springs, strut tower and trunk-mounted braces)					
Steering	Variable-assist power rack-and-pinion					
Turning circle diameter, curb to curb (ft.)	36.1	36.1	36.1	36.1	36.1	36.1
Brakes	Power-assisted ventilated front/solid rear discs					
Anti-lock Brake System (ABS) with Electronic Brake-force Distribution (EBD) and Brake Assist ¹⁶	Standard	Standard	Standard	Standard	Standard	Standard
Vehicle Stability Control (VSC) ¹⁷ with off switch and Traction Control (TRAC)	Standard	Standard	Standard	Standard	Standard	Standard
EXTERIOR DIMENSIONS (in.)						
Overall height, unloaded	57.9	57.9	57.7	57.7	57.9	57.9
Overall width	71.7	71.7	71.7	71.7	71.7	71.7
Overall length	189.2	189.2	189.2	189.2	189.2	189.2
Wheelbase	109.3	109.3	109.3	109.3	109.3	109.3
Ground clearance	5.5	5.3	5.3	5.1	5.5	5.3
Track (front/rear)	62.0/61.6	62.0/61.6	62.0/61.6	62.0/61.6	62.0/61.6	62.0/61.6
Coefficient of drag (Cd)	0.28	0.28	0.28	0.28	0.28	0.28
INTERIOR DIMENSIONS front/rear (in.)						
Head room						
without moonroof	38.8/37.8	38.8/37.8	38.8/37.8	38.8/37.8	NA	NA
with moonroof	37.9/37.4 ¹	37.9/37.4	37.9/37.4	37.9/37.4	37.9/37.4	37.9/37.4
Shoulder room	57.8/56.9	57.8/56.9	57.8/56.9	57.8/56.9	57.8/56.9	57.8/56.9
Hip room	54.6/53.9	54.6/53.9	54.6/53.9	54.6/53.9	54.6/53.9	54.6/53.9
Leg room	41.7/38.3	41.7/38.3	41.7/38.3	41.7/38.3	41.7/38.3	41.7/38.3
Seating capacity	5	5	5	5	5	5
WEIGHTS AND CAPACITIES						
Curb weight, manual/automatic (lb.)	3263/3307	NA/3461	3285/3329	NA/3483	NA/3373	NA/3516
EPA passenger volume (cu. ft.)	101.4	101.4	101.4	101.4	101.4	101.4
Cargo volume, rear seat up (cu. ft.) ¹⁸	15.0	15.0	14.5	14.5	14.5	14.5
Fuel tank (gal.)	18.5	18.5	18.5	18.5	18.5	18.5
TIRES						
Size	P215/60R16	P215/60R16	P215/55R17	P215/55R17	P215/60R16	P215/60R16
Type	All-Season	All-Season	Performance ^{12, 19}	Performance ^{12, 19}	All-Season	All-Season
MILEAGE ESTIMATES (mpg city/highway)²⁰						
Manual transmission	22/33	NA	22/33	NA	NA	NA
Automatic transmission	22/32	20/29	22/32	20/29	22/32	20/29

See numbered footnotes in Disclaimers section.

FEATURES²¹

EXTERIOR	CAMRY	LE	SE	XLE		CAMRY	LE	SE	XLE
Projector-beam headlamps with auto on/off feature and Daytime Running Lights (DRL) with manual on/off feature	S	S	–	S	Heated outside mirrors	–	–	O ^{22/p22}	S
Projector-beam headlamps with smoked sport trim, auto on/off feature and Daytime Running Lights (DRL) with manual on/off feature	–	–	S	–	High Solar Energy-Absorbing (HSEA) glass	S	S	S	S
Integrated front fog lamps	–	–	S	S	Washer-linked variable intermittent windshield wipers	S	S	S	S
LED (light-emitting diode) tail, stop and side marker lamps	S	S	S	S	Power tilt/slide moonroof	–	P	P	S
16-in. steel wheels with full wheel covers and P215/60R16 tires	S	S	–	–	Blackout front sport grille	–	–	S	–
16-in. 7-spoke alloy wheels with P215/60R16 tires	–	O	–	–	Rear window defogger with timer	S	S	S	S
17-in. 5-spoke machine-finished alloy wheels with P215/55R17 tires ^{12, 19}	–	–	S	–	Dual rear exhaust outlets (V6 only)	–	S	S ²³	S
16-in. 10-spoke alloy wheels with P215/60R16 tires	–	–	–	S	Chrome-tipped exhaust	–	S ²⁴	S	S
Color-keyed power outside mirrors	S	S	S	S	Color-keyed front and rear underbody spoilers and side rocker panels	–	–	S	–
					Rear spoiler	–	–	O	–
INTERIOR									
Multi-Information Display with outside temperature, average fuel economy, distance to empty, average speed and trip distance	–	–	–	S	JBL® AM/FM 6-disc CD changer with MP3/WMA playback capability, eight speakers, XM® Radio ¹¹ (includes 90-day trial subscription), auxiliary audio jack, USB ²⁹ port with iPod® ⁸ connectivity, CD-text display, auto sound leveling, hands-free phone capability and music streaming via Bluetooth® ³⁰ wireless technology, and Vacuum Fluorescent Display	–	O ²²	O ²²	S
Remote keyless entry system with lock, unlock, trunk-release, panic and remote illuminated entry function	–	S	S	S	Voice-activated touch-screen DVD navigation system ³¹ with integrated backup camera; ³² JBL® AM/FM 4-disc CD changer with MP3/WMA playback capability, eight speakers, XM® Radio ¹¹ with XM NavTraffic® ³¹ (includes 90-day trial subscription), auxiliary audio jack, USB ²⁹ port with iPod® ⁸ connectivity, and hands-free phone capability and music streaming via Bluetooth® ³⁰ wireless technology	–	–	O	O
Smart Key System ²⁵ on two doors and trunk with Push Button Start	–	–	O ²²	O	Day/night rearview mirror	S	S	S	S
Tilt/telescopic adjustable steering wheel with audio controls	S	S	S	S	Auto-dimming rearview mirror with compass	–	O ²²	O ^{33/p22}	S
Cruise control	S	S	S	S	Illuminated entry	S	S	S	S
4-spoke leather-wrapped steering wheel and wood-grain-style shift knob	–	–	–	S	HomeLink® ³⁴ universal transceiver	–	–	P ²²	S
3-spoke leather-wrapped sport steering wheel and shift knob	–	–	S	–	Power windows with auto up/down, jam protection in all positions and retained-power features	S	S	S	S
Fabric seat and door trim with integrated armrests	S	S	S	–	Power door locks with shift-activated locking feature and anti-lockout feature	S	S	S	S
Fabric seat and door trim treated with Fraichir™ ²⁶ process with integrated armrests	–	–	–	S ¹³	Optitron meters with speedometer, tachometer, digital odometer, twin tripmeters with outside temperature display, engine coolant temperature and fuel gauges	S	S	S	S
Leather-trimmed seats and door trim with integrated armrests and center armrest	–	–	O ²²	O ¹⁴	Blue Optitron sport meters	–	–	S	–
Heated front seats	–	–	O ²⁷	O ²⁷	Manual rear window sunshade	–	–	–	S
Sport fabric-trimmed seats	–	–	S	–	Rear-seat reading lights	–	P	P	S
Aluminum doorsills and sport pedals	–	–	S	–	Hand lever parking brake (manual transmission only)	S	S	S	–
Metallic-style interior trim with chrome door handle accents	–	S	S	–	Foot pedal parking brake (automatic transmission only)	S	S	S	S
Wood-grain-style interior trim with chrome accents on door handles	–	–	–	S	Remote hood, trunk and fuel-filler door releases	S	S	S	S
Multi-adjustable front bucket seats with adjustable headrests and seatback pockets; manual driver's seat with vertical seat height adjuster	S	–	–	–	Dual sun visors with illuminated vanity mirrors	–	P	P	S
Multi-adjustable power driver's seat with adjustable headrest, seatback pocket and lumbar support	–	S	S	S	Overhead console with maplights and sunglasses holder	S	S	S	S
Multi-adjustable power front passenger seat	–	–	O ²⁷	S	Lockable illuminated glove compartment	S	S	S	S
60/40 split fold-down rear seat with security locks, adjustable headrests and seatbelt positioning clips	S	S	–	–	Digital quartz clock	S	S	S	S
40/20/40 split manually reclining rear seats with separate headrests and locking trunk pass-through	–	–	–	S	Bi-level covered center console with storage	S	S	S	S
CFC-free air conditioning with air filter	S	S	S	–	Sliding center armrest	–	–	–	S
Dual zone CFC-free automatic climate control with dust and pollen filter, Plasmacluster™ ²⁸ ionizer and rear-seat vents	–	–	–	S	Two 12V auxiliary power outlets	S	S	S	S
AM/FM CD player with MP3/WMA playback capability, six speakers, XM Compatible ¹¹ (additional hardware and subscription required) and auxiliary audio jack	S	S	S	–	Front cup holders	S	S	S	S
AM/FM CD player with MP3/WMA playback capability, six speakers, XM® Radio ¹¹ (includes 90-day trial subscription), auxiliary audio jack, USB ²⁹ port with iPod® ⁸ connectivity, CD-text display function, auto sound leveling, hands-free phone capability and music streaming via Bluetooth® ³⁰ wireless technology, and Vacuum Fluorescent Display	–	O	O	–	Fold-down rear center armrest with dual cup holders	S	S	S	S
					Trunk luggage box	S	S	S	S
					Trunk-mounted cargo net	–	–	–	S

See numbered footnotes in Disclaimers section.

FEATURES

SAFETY AND CONVENIENCE

	CAMRY	LE	SE	XLE
STAR SAFETY SYSTEM™ — includes Vehicle Stability Control (VSC) ¹⁷ with off switch + Traction Control (TRAC), Anti-lock Brake System (ABS) with Electronic Brake-force Distribution (EBD), Brake Assist (BA) ¹⁶ and Smart Stop Technology (SST) ³⁵	S	S	S	S
Driver and front passenger Advanced Airbag System ³⁶	S	S	S	S
Driver and front passenger front seat-mounted side airbags and front and rear side curtain airbags ³⁶	S	S	S	S
Driver's knee airbag ³⁶	S	S	S	S
3-point seatbelts for all seating positions, driver-side Emergency Locking Retractor (ELR) and Automatic/Emergency Locking Retractors (ALR/ELR) on all passenger belts	S	S	S	S
Outboard rear seatbelt comfort guides	S	S	S	S
Front and rear crumple zones	S	S	S	S

Side-impact door beams	S	S	S	S
Direct Tire Pressure Monitor System (TPMS) ³⁷	S	S	S	S
Energy-absorbing collapsible steering column	S	S	S	S
Child-protector rear door locks	S	S	S	S
LATCH (Lower Anchors and Tethers for Children) for outboard rear seating positions only	S	S	S	S
Internal trunk-release handle	S	S	S	S
Battery-saver feature — deactivates dome light after 20 minutes	S	S	S	S
Engine immobilizer ³⁸	S	S	S	–
Engine immobilizer with alarm ³⁸	–	–	–	S

S = Standard O = Optional – = Not Available P = Feature is available as part of an option package.

PACKAGES AND OPTIONS

LE

Moonroof Package — includes power tilt/slide moonroof, dual sun visors with illuminated vanity mirrors and rear-seat reading lights

Auto-dimming rearview mirror with compass²²

16-in. 7-spoke alloy wheels with P215/60R16 tires

AM/FM CD player with MP3/WMA playback capability, six speakers, XM® Radio¹¹ (includes 90-day trial subscription), auxiliary audio jack, USB²⁹ port with iPod® connectivity, CD-text display function, auto sound leveling, hands-free phone capability and music streaming via Bluetooth®³⁰ wireless technology, and Vacuum Fluorescent Display

JBL® AM/FM 6-disc CD changer with MP3/WMA playback capability, eight speakers, XM® Radio¹¹ (includes 90-day trial subscription), auxiliary audio jack, USB²⁹ port with iPod® connectivity, CD-text display, auto sound leveling, hands-free phone capability and music streaming via Bluetooth®³⁰ wireless technology, and Vacuum Fluorescent Display

SE

Sport Leather Package — includes heated front seats, leather-trimmed seats and door trim with integrated armrests and color-keyed heated power outside mirrors²²

Sport Convenience Package — includes HomeLink®³⁴ universal transceiver and auto-dimming rearview mirror with compass²²

Moonroof Package — includes power tilt/slide moonroof, dual sun visors with illuminated vanity mirrors and rear-seat reading lights

Rear spoiler

AM/FM CD player with MP3/WMA playback capability, six speakers, XM® Radio¹¹ (includes 90-day trial subscription), auxiliary audio jack, USB²⁹ port with iPod® connectivity, CD-text display function, auto sound leveling, hands-free phone capability and music streaming via Bluetooth®³⁰ wireless technology, and Vacuum Fluorescent Display

JBL® AM/FM 6-disc CD changer with MP3/WMA playback capability, eight speakers, XM® Radio¹¹ (includes 90-day trial subscription), auxiliary audio jack, USB²⁹ port with iPod® connectivity, CD-text display, auto sound leveling, hands-free phone capability and music streaming via Bluetooth®³⁰ wireless technology, and Vacuum Fluorescent Display

Voice-activated touch-screen DVD navigation system³¹ with integrated backup camera³² JBL® AM/FM 4-disc CD changer with MP3/WMA playback capability, eight speakers, XM® Radio¹¹ with XM NavTraffic®³¹ (includes 90-day trial subscription), auxiliary audio jack, USB²⁹ port with iPod® connectivity, and hands-free phone capability and music streaming via Bluetooth®³⁰ wireless technology

Heated outside mirrors²²

Sport leather-trimmed seats and door trim with integrated armrests and power front passenger seat²²

Smart Key System^{22, 25} on two doors and trunk with Push Button Start

XLE

Leather-trimmed seats and door trim with integrated armrests and center armrest¹⁴

Heated front seats²⁷

Smart Key System²⁵ on two doors and trunk with Push Button Start

Voice-activated touch-screen DVD navigation system³¹ with integrated backup camera³² JBL® AM/FM 4-disc CD changer with MP3/WMA playback capability, eight speakers, XM® Radio¹¹ with XM NavTraffic®³¹ (includes 90-day trial subscription), auxiliary audio jack, USB²⁹ port with iPod® connectivity, and hands-free phone capability and music streaming via Bluetooth®³⁰ wireless technology

WARRANTIES

Every Toyota Car, Truck and SUV is built to exceptional standards. And that's not idle boasting. We back it up with these Limited Warranty Coverages:

Basic: 36 months/36,000 miles (all components other than normal wear and maintenance items).

Hybrid-Related Component Coverage: Hybrid-related components, including the HV battery, battery control module, hybrid control module and inverter with converter, are covered for 8 years/100,000 miles. The HV battery may have longer coverage under emissions warranty. Refer to applicable *Warranty and Maintenance Guide* for details.

Powertrain: 60 months/60,000 miles (engine, transmission/transaxle, drive system, seatbelts and airbags).

Rust-Through: 60 months/unlimited miles (corrosion perforation of sheet metal).

Emissions: Coverages vary under Federal and California regulations. Refer to applicable *Warranty and Maintenance Guide* for details.

Accessories: For Genuine Toyota accessories purchased at the time of the new vehicle purchase, the Toyota Accessory Warranty coverage is in effect for 36 months/36,000 miles from the vehicle's in-service date, which is the same coverage as the Toyota New Vehicle Limited Warranty.

For Genuine Toyota accessories purchased after the new vehicle purchase the coverage is 12 months, regardless of mileage, from the date the accessory was installed on the vehicle, or the remainder of any applicable new vehicle warranty, whichever provides greater coverage, with the exception of car covers. Car covers are warranted for 12 months from the date of purchase and do not assume any coverage under the Toyota New Vehicle Limited Warranty.

You may be eligible for transportation assistance if it's necessary that your vehicle be kept overnight for repairs covered under warranty. Please see your authorized Toyota dealership for further details.

For complete details about Toyota's warranties, please visit www.toyota.com, refer to the applicable *Warranty and Maintenance Guide* or see your Toyota dealer.

EXTERIOR

Projector-beam headlamps with auto on/off feature and Daytime Running Lights (DRL) with manual on/off feature	S	Heated outside mirrors	O/P ³⁸
Hybrid Synergy Drive [®] blue accent headlamps	S	Acoustic noise-reducing front windshield	S
Integrated front fog lamps	O	High Solar Energy-Absorbing (HSEA) glass	S
LED (light-emitting diode) for tail, stop and side marker lamps	S	Washer-linked variable intermittent windshield wipers	S
16-in. steel wheels with full wheel covers and P215/60R16 tires	S	Power tilt/slide moonroof	P ³⁸
16-in. 10-spoke alloy wheels with P215/60R16 tires	P ³⁸	Rear window defogger with timer	S
Color-keyed power outside mirrors	S	Chrome-tipped exhaust	S

INTERIOR

Multi-Information Display with Eco Drive Level, energy monitor, outside temperature, average fuel economy, distance to empty, average speed and trip distance	S	Day/night rearview mirror	S
Remote keyless entry system with lock, unlock, trunk-release, panic and remote illuminated entry function	S	Auto-dimming rearview mirror with compass	P ³⁹
Smart Key System ²⁵ on two doors and trunk with Push Button Start	S	Illuminated entry	S
Tilt/telescopic adjustable steering wheel with audio and climate controls	S	HomeLink ^{®34} universal transceiver	P ³⁹
Cruise control	S	Power windows with auto up/down, jam protection in all positions and retained-power features	S
4-spoke leather-wrapped steering wheel and wood-grain-style shift knob	P ³⁹	Power door locks with shift-activated locking feature and anti-lockout feature	S
Fabric seat and door trim treated with Fraichir ^{TM26} process, with integrated armrests	S	Optitron meters with speedometer, instantaneous fuel economy meter, digital odometer, twin tripmeters with outside temperature, engine coolant and fuel gauges, and instant fuel consumption	S
Leather-trimmed seats and door trim with integrated armrests, sliding center armrest, power front passenger seat and wood-grain-style interior trim	P ³⁹	Rear-seat reading lights	P ³⁹
Heated front seats	P ^{39, 40}	Foot pedal parking brake	S
Metallic-style interior trim with chrome door handle accents	S	Remote hood, trunk and fuel-filler door releases	S
Multi-adjustable power driver's seat with adjustable headrest, seatback pocket and lumbar support	S	Dual sun visors with illuminated vanity mirrors	P ³⁹
60/40 split fold-down rear seat with security locks, adjustable headrests and seatbelt positioning clips	S	Overhead console with maplights and sunglasses holder	S
Dual zone CFC-free automatic climate control with electric compressor, dust and pollen filter, Plasmacluster ^{TM28} ionizer and rear-seat vents	S	Lockable illuminated glove compartment	S
AM/FM CD player with MP3/WMA playback capability, six speakers, XM Compatible ¹¹ (additional hardware and subscription required) and auxiliary audio jack	S	Digital quartz clock	S
JBL [®] AM/FM 6-disc CD changer with MP3/WMA playback capability, eight speakers, XM [®] Radio ¹¹ (includes 90-day trial subscription), auxiliary audio jack, USB ²⁹ port with iPod ^{®8} connectivity, CD-text display, auto sound leveling, hands-free phone capability and music streaming via Bluetooth ^{®30} wireless technology, and Vacuum Fluorescent Display	P ³⁹	Bi-level covered center console with storage	S
Voice-activated touch-screen DVD navigation system ³¹ with integrated backup camera; ³² JBL [®] AM/FM 4-disc CD changer with MP3/WMA playback capability, eight speakers, XM [®] Radio ¹¹ with XM NavTraffic ^{®31} (includes 90-day trial subscription), auxiliary audio jack, USB ²⁹ port with iPod ^{®8} connectivity, and hands-free phone capability and music streaming via Bluetooth ^{®30} wireless technology	P ³⁹	Sliding center armrest	P ³⁹
		Two 12V auxiliary power outlets	S
		Front cup holders	S
		Fold-down rear center armrest with dual cup holders	S
		Trunk-mounted cargo net	S

SAFETY AND CONVENIENCE

STAR SAFETY SYSTEM ™ Star Safety System TM with Vehicle Dynamics Integrated Management (VDIM) ⁴¹ — includes Vehicle Stability Control (VSC) ¹⁷ + Traction Control (TRAC), Anti-lock Brake System (ABS) with Electronic Brake-force Distribution (EBD), Brake Assist (BA) ¹⁶ and Smart Stop Technology (SST) ³⁵	S	Side-impact door beams	S
Driver and front passenger Advanced Airbag System ³⁶	S	Direct Tire Pressure Monitor System (TPMS) ³⁷	S
Driver and front passenger front seat-mounted side airbags and front and rear side curtain airbags ³⁶	S	Energy-absorbing collapsible steering column	S
Driver's knee airbag ³⁶	S	Child-protector rear door locks	S
3-point seatbelts for all seating positions, driver-side Emergency Locking Retractor (ELR) and Automatic/Emergency Locking Retractors (ALR/ELR) on all passenger belts	S	LATCH (Lower Anchors and Tethers for Children) for outboard rear seating positions only	S
Outboard rear seatbelt comfort guides	S	Internal trunk-release handle	S
Front and rear crumple zones	S	Battery-saver feature — deactivates dome light after 20 minutes	S
		Engine immobilizer ³⁸	S

S = Standard O = Optional P = Feature is available as part of an option package.

COLOR



BLACK



BLUE RIBBON METALLIC



BLUE WHISPER MICA



SPRUCE MICA



ALOE GREEN METALLIC³



BARCELONA RED METALLIC



SANDY BEACH METALLIC³



MAGNETIC GRAY METALLIC

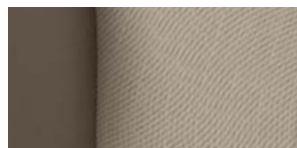


CLASSIC SILVER METALLIC⁴



SUPER WHITE

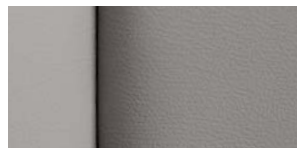
FABRIC/LEATHER



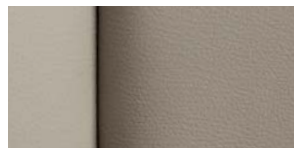
Fabric in Ash



Fabric in Bisque



Available leather in Ash



Available leather in Bisque

WHEEL



Standard 16-in.
steel wheel with
full wheel cover



Available 16-in.
10-spoke
alloy wheel

HYBRID COMBINATIONS AND SPECIFICATIONS

MECHANICAL/PERFORMANCE

Hybrid System Net Power	187 hp (140 kW)
Gasoline Engine	2.4-liter 4-cylinder Hybrid DOHC 16-valve VVT-i; 147 hp @ 6000 rpm; 138 lb.-ft. @ 4400 rpm
Ignition	Electronic, with Toyota Direct Ignition (TDI)
Electric Motor Power output	199 lb.-ft. @ 0-1500 rpm (105 kW @ 4500 rpm)
Motor type	Permanent magnet AC synchronous motor
Voltage	650V maximum
Traction Battery Power output	40 hp (30 kW)
Type	Sealed Nickel-Metal Hydride (Ni-MH) ⁴²
Voltage	244.8V
Transmission	Electronically Controlled continuously Variable Transmission (ECVT)
Suspension	MacPherson strut front suspension with gas-filled shock absorbers and stabilizer bar; dual-link independent MacPherson strut rear suspension with gas-filled shock absorbers and stabilizer bar
Steering	Electric Power Steering (EPS); rack-and-pinion with electric power-assist
Turning circle diameter, curb to curb (ft.)	36.1
Brakes	Power-assisted ventilated front/solid rear discs with integrated regenerative braking

EXTERIOR DIMENSIONS (in.)

Overall height, unloaded	57.5
Overall width/length	71.7/189.2
Wheelbase	109.3
Ground clearance	5.9
Track (front/rear)	62.0/61.6
Coefficient of drag (Cd)	0.27

INTERIOR DIMENSIONS front/rear (in.)

Head room without moonroof (with moonroof)	38.8/37.8 (37.9/37.4)
Shoulder room	57.8/56.7
Hip room	54.6/53.9
Leg room	41.6/38.3
Seating capacity	5

WEIGHTS AND CAPACITIES

Curb weight (lb.)	3680
EPA passenger volume (cu. ft.)	101.4
Cargo volume, rear seat up (cu. ft.) ¹⁸	10.6
Fuel tank (gal.)	17.2

TIRES

Size	P215/60R16
Type	All-Season

MILEAGE ESTIMATES (mpg city/highway)²⁰

ECVT transmission	31/35
-------------------	-------

See numbered footnotes in Disclaimers section.

HYBRID PACKAGES AND OPTIONS

Moonroof Package³⁹ — includes power tilt/slide moonroof, dual sun visors with illuminated vanity mirrors and rear-seat reading lights

Comfort and Convenience Package^{39, 43} — includes heated front seats and outside mirrors

Leather Package³⁹ — includes leather-trimmed seats and door trim with integrated armrests, sliding center armrest, power front passenger seat and wood-grain-style interior trim

Upgrade Package — includes 16-in. 10-spoke alloy wheels with P215/60R16 tires, JBL® AM/FM 6-disc CD changer with MP3/WMA playback capability, eight speakers, XM® Radio¹¹ (includes 90-day trial subscription), auxiliary audio jack, USB²⁹ port with iPod® connectivity, CD-text display, auto sound leveling, hands-free phone capability and music streaming via Bluetooth®³⁰ wireless technology, Vacuum Fluorescent Display, leather-wrapped steering wheel and shift knob, auto-dimming rearview mirror with compass, and HomeLink®³⁴ universal transceiver

Upgrade Package with DVD Navigation³¹ — includes 16-in. 10-spoke alloy wheels with P215/60R16 tires, voice-activated touch-screen DVD navigation system³¹ with integrated backup camera,³² JBL® AM/FM 4-disc CD changer with MP3/WMA playback capability, eight speakers, XM® Radio¹¹ with XM NavTraffic®³¹ (includes 90-day trial subscription), auxiliary audio jack, USB²⁹ port with iPod® connectivity, hands-free phone capability and music streaming via Bluetooth®³⁰ wireless technology, leather-wrapped steering wheel and shift knob, auto-dimming rearview mirror with compass, and HomeLink®³⁴ universal transceiver

Heated outside mirrors³⁹

Integrated front fog lamps

TOYOTA CARE



ToyotaCare

Covers normal factory scheduled service. Plan is 2 years or 25K miles, whichever comes first. The new Toyota vehicle cannot be part of a rental or commercial fleet, or a livery or taxi vehicle. See plan for complete coverage details. See participating Toyota dealer for details.

DISCLAIMERS

1. Not available on Camry grade. **2.** Not available on SE. **3.** Not available with Ash interior. **4.** Not available with Bisque interior. **5.** Performance of BLU Logic® compatible phones will vary based on phone software version, coverage and your wireless carrier. See www.blulogicupdate.com for more details. **6.** This floor mat was designed specifically for use in your model and model year vehicle and SHOULD NOT be used in any other vehicle. To avoid potential interference with pedal operation, each mat must be secured with retention hooks/clips. Do not install a floor mat on top of an existing floor mat. **7.** Interface kit for iPod® not available if vehicle is equipped with XM® Radio services. **8.** iPod® is a registered trademark of Apple, Inc. All rights reserved. **9.** Automatic transmission only. **10.** Available for vehicles with factory remote keyless entry. **11.** XM services require a subscription after 90-day trial period. Subscriptions governed by XM Customer Agreement available at xmradio.com. **If you decide to continue your XM service at the end of your complimentary trial, the plan you choose will automatically renew and bill at then-current rates unless you call 1-800-967-2346 to cancel.** Fees and programming subject to change. Available only to those at least 18 years of age in the 48 contiguous United States and D.C. **12.** Performance tires are expected to experience greater tire wear than conventional tires. Tire life may be less than 24,000 miles, depending upon driving conditions. **13.** 4-cylinder only. **14.** Standard on V6, available on 4-cylinder. **15.** In certain areas, 4-cylinder automatic models are equipped as Partial Zero Emission Vehicles (PZEV). For Camry 4-cylinder models certified as Partial Zero Emission Vehicles (PZEV), all emissions components are covered for 15 years or 150,000 miles, whichever occurs first, for performance or defect. **16.** Brake Assist is designed to help the driver take full advantage of the benefits of ABS. It is not a substitute for safe driving practices. Braking effectiveness also depends on proper brake-system maintenance and tire and road conditions. **17.** Vehicle Stability Control (VSC) is an electronic system designed to help the driver maintain vehicle control under adverse conditions. It is not a substitute for safe driving practices. Factors including speed, road conditions and driver steering input can all affect whether VSC will be effective in preventing a loss of control. Please see your *Owner's Manual* for further details. **18.** Cargo and load capacity limited by weight and distribution. **19.** SE available with All-Season tires as a no-cost option. **20.** 2011 EPA-estimated mileage. Actual mileage will vary. **21.** Toyota strives to build vehicles to match customer interest and thus they typically are built with popular options and option packages. Not all options/packages are available separately and some may not be available in all regions of the country. See toyota.com for information about options/packages commonly available in your area. If you would prefer a vehicle without any or with different options, contact your dealer to check for current availability or the possibility of placing a special order. **22.** Automatic transmission only. **23.** Includes 4-cylinder and V6 models. **24.** V6 only. **25.** The Smart Key System may interfere with some pacemakers or cardiac defibrillators. If you have one of these medical devices, please talk to your doctor to see if you should deactivate this system. **26.** Fraichir™ is a trademark of Seiren Co., Ltd. **27.** Requires available leather-trimmed seats. **28.** Plasmacluster™ is a trademark of Sharp Electronics, Inc. **29.** May not be compatible with all MP3/WMA players and like models. **30.** The Bluetooth® technology phones listed on toyota.com have been tested for compatibility with Toyota vehicles. Performance will vary based on phone software version, coverage and your wireless carrier. Phones are warranted by their manufacturer, not Toyota. **31.** Availability and accuracy of the information provided by the navigation system or any XM services mentioned (if installed) are dependent upon many factors. Use common sense when relying on information provided. Services not available in every city or roadway. Periodic navigation updates available at additional cost. See your *Navigation System Owner's Manual* or contact XM for details. **32.** The backup camera does not provide a comprehensive view of the rear area of the vehicle. You should also look around outside your vehicle and use your mirrors to confirm rearward clearance. Cold weather will limit effectiveness and view may become cloudy. **33.** Manual transmission only. **34.** HomeLink® is a registered trademark of Johnson Controls, Inc. **35.** Smart Stop Technology operates only in the event of certain simultaneous brake and gas pedal applications. When engaged, the system will reduce engine power to help the brakes bring the vehicle to a stop. Factors including speed, road conditions and driver input all impact stopping distance. Smart Stop Technology is not a substitute for safe and attentive driving and does not guarantee instant stopping. Please see your *Owner's Manual* for further details. **36.** All the airbag (AB) systems are Supplemental Restraint Systems. All ABs (if installed) are designed to inflate only under certain conditions and in certain types of severe collisions: frontal and knee ABs typically inflate in frontal collisions; side and side curtain ABs in side collisions; Roll-Sensing Curtain ABs at a severe tilt degree, roll or lateral G-force. In all other accidents, the ABs will not inflate. To decrease the risk of injury from an inflating AB, always wear seatbelts, sit upright in the middle of the seat as far back as possible and do not lean against the door. Do not put objects in front of an AB or around the seatback. Do not use a rearward-facing child seat in any front passenger seat. The force of an inflating AB may cause serious injury or death. See your *Owner's Manual* for further information/warnings. **37.** The Toyota Tire Pressure Monitor alerts the driver when tire pressure is critically low. For optimal tire wear and performance, tire pressure should be checked regularly with a gauge; do not rely solely on the monitor system. See your *Owner's Manual* for details. **38.** The engine immobilizer is a state-of-the-art anti-theft system. When you insert your key into the ignition switch or bring a Smart Key fob into the vehicle, the key transmits an electronic code to the vehicle. The engine will only start if the code in the transponder chip inside the key or Smart Key fob matches the code in the vehicle's immobilizer. Because the transponder chip is embedded in the key or Smart Key fob, it can be costly to replace. If you lose a key or Smart Key fob, your Toyota dealer can help. Alternatively, you can find a qualified independent locksmith to perform high-security key services by consulting your local Yellow Pages or by contacting www.aloa.org **39.** Requires Upgrade Package. **40.** Requires Comfort and Convenience Package and Leather Package. **41.** Vehicle Dynamics Integrated Management (VDIM) is an electronic system designed to help the driver maintain vehicle control under adverse conditions. It is not a substitute for safe driving practices. Factors including speed, road conditions and driver steering input can all affect whether VDIM will be effective in preventing a loss of control. Please see your *Owner's Manual* for further details. **42.** Hybrid vehicle battery expected life is 150,000 miles based on laboratory bench testing. **43.** Requires Leather Package.

Some vehicles are shown with available equipment. Seatbelts should be worn at all times. For details on vehicle specifications, standard features and available equipment in your area, contact your Toyota dealer. A vehicle with particular equipment may not be available at the dealership. Ask your Toyota dealer to help locate a specifically equipped vehicle.

All information presented herein is based on data available at the time of posting, is subject to change without notice and pertains specifically to mainland U.S.A. vehicles only.



For Toyota Mobility program details, go to www.toyota.com/mobility or call the Toyota Customer Assistance Center at 1-800-331-4331