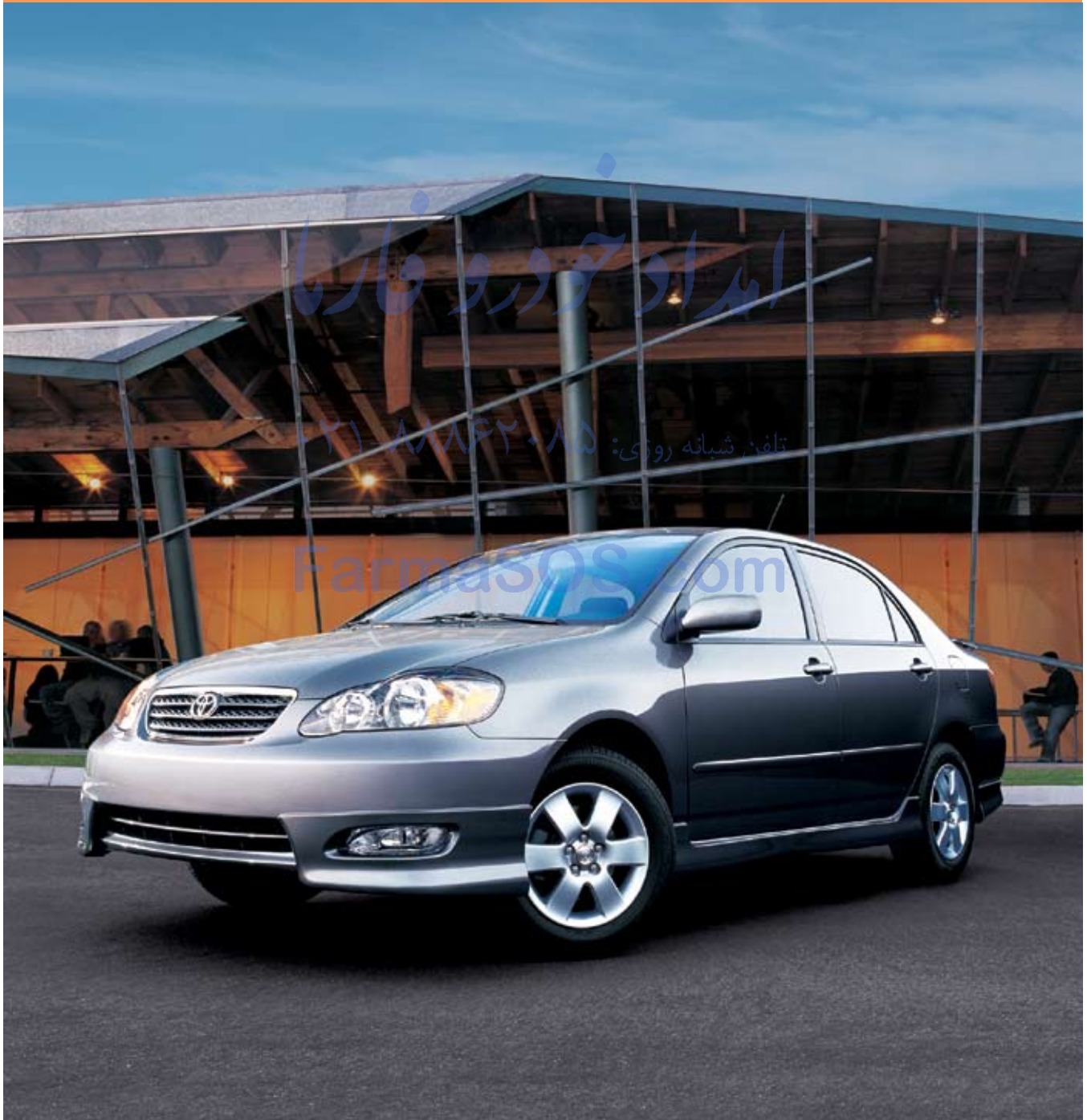


You're in the driver's seat. Fortunately you get to choose which one.

**COROLLA** 08



# COROLLA 08



**CE**  
5-Speed Manual (1801)  
MSRP\*\* Starting At: \$14,405.00



**CE**  
4-Speed Automatic (1802)  
MSRP\*\* Starting At: \$15,205.00



**S**  
5-Speed Manual (1811)  
MSRP\*\* Starting At: \$15,450.00



**S**  
4-Speed Automatic (1812)  
MSRP\*\* Starting At: \$16,250.00



**LE**  
5-Speed Manual (1821)  
MSRP\*\* Starting At: \$15,615.00






**LE**  
4-Speed Automatic (1822)  
MSRP\*\* Starting At: \$16,415.00

## Exterior colors available for your Corolla\*

Super White 	Silver Streak Mica 	Impulse Red Pearl 	Indigo Ink Pearl 
Speedway Blue 	Phantom Gray Pearl 	Black Sand Pearl 	Desert Sand Mica 

## Interior colors available for your Corolla\*

Stone Fabric 	Beige Fabric 	Dark Charcoal fabric 
--	--	---

FarmaSOS.com

\*This vehicle eBrochure is designed to identify vehicles commonly available in your area. If you would prefer to purchase a vehicle with no options or additional options, please contact your local dealer to check for current availability or the possibility of placing an order for such a vehicle.

MSRP\*\*  
2008 Manufacturer's Suggested Retail Price, excludes the Delivery, Processing and Handling Fee of \$660 for Cars and \$685 for Trucks, Vans and SUVs. (Historically, vehicle manufacturers and distributors have charged a separate fee for processing, handling and delivering vehicles to dealerships. Toyota's charge for these services is called the "Delivery, Processing and Handling Fee" and is based on the value of the processing, handling and delivery services Toyota provides as well as Toyota's overall pricing structure. Toyota may make a profit on the Delivery, Processing and Handling Fee.) Excludes taxes, license, title and available or regionally required equipment. The Delivery, Processing and Handling Fee in AL, AR, FL, GA, LA, MS, NC, OK, SC and TX will be higher. Actual dealer price may vary. Pricing, specifications, standard features and available equipment are based on information available when this page was produced and are subject to change without notice.



## Standard Features and Options\*

S = Standard O = Optional P = Part of Package

### EXTERIOR

	CE 5-Speed Manual (1801)	CE 4-Speed Auto (1802)	S 5-Speed Manual (1811)	S 4-Speed Auto (1812)	LE 5-Speed Manual (1821)	LE 4-Speed Auto (1822)
Aerodynamic multi-reflector halogen headlamps w/Daytime Running Lights (DRL)	S	S	-	-	S	S
Aerodynamic multi-reflector halogen headlamps w/Daytime Running Lights (DRL) & smoked lenses	-	-	S	S	-	-
Integrated front fog lamps	-	-	S	S	-	-
Color-keyed rear deck spoiler	-	-	P	P	-	-
Intermittent windshield wipers	S	S	S	S	-	-
Variable intermittent windshield wipers with mist cycle	-	-	-	-	S	S
Power remote-controlled outside mirrors	S	S	-	-	-	-
Color-keyed power remote-controlled outside mirrors	-	-	S	S	S	S
Black protective body side moldings	S	S	-	-	-	-
Color-keyed protective body side moldings	-	-	S	S	S	S
Color-keyed outside door handles	S	S	S	S	S	S
Color-keyed front and rear underbody spoilers, side rocker panel moldings and rear mudguards	-	-	S	S	-	-
Chrome grille surround	S	S	S	S	S	S
15-in. steel wheels w/P185/65R15 tires & full wheel covers	S	S	-	-	-	-
15-in. steel wheels w/P195/65R15 tires & full wheel covers	-	-	S	S	S	S
15-in. alloy wheels w/P195/65R15 tires	-	-	P	P	O	O
16-in. alloy wheels w/P195/55R16 tires [6]	-	-	O	O	-	-
Power tilt/slide moonroof w/sunshade [7]	-	-	O	O	O	O

\*This vehicle eBrochure is designed to identify vehicles commonly available in your area. If you would prefer to purchase a vehicle with no options or additional options, please contact your local dealer to check for current availability or the possibility of placing an order for such a vehicle.



## Standard Features and Options\*

S = Standard O = Optional P = Part of Package

CE 5-Speed Manual (1801)	CE 4-Speed Auto (1802)	S 5-Speed Manual (1811)	S 4-Speed Auto (1812)	LE 5-Speed Manual (1821)	LE 4-Speed Auto (1822)
--------------------------	------------------------	-------------------------	-----------------------	--------------------------	------------------------

### INTERIOR

Instrumentation: black speedometer, tachometer with LCD odometer and twin tripmeters; and coolant temperature, fuel level and outside temperature gauge	S	S	-	-	-	-
Instrumentation: red-illuminated white-silhouette speedometer, tachometer with LCD odometer and twin tripmeters; and coolant temperature, fuel level and outside temperature gauges	-	-	S	S	-	-
Instrumentation: optitron meters with speedometer, tachometer with LCD odometer and twin tripmeters; and coolant temperature, fuel level and outside temperature gauges	-	-	-	-	S	S
Airbag, seatbelt, low-fuel level, door-ajar, battery, check engine, oil pressure, brake and Direct Tire Pressure Monitor System (TPMS)[4] warning lights (ABS warning light on ABS-equipped models)	S	S	S	S	S	S
Digital clock	S	S	S	S	S	S
Tilt steering wheel	S	S	S	S	S	S
Cruise control	O/P	O/P	P	P	P	P
Leather-wrapped steering wheel and shift lever knob[8]	-	-	O	O	-	-
Defroster-linked CFC-free air conditioning with air filter	S	S	S	S	S	S
AM/FM CD with four speakers	S	S	-	-	-	-
AM/FM CD with six speakers	-	-	S	S	S	S
AM/FM 6-disc in-dash CD changer with six speakers	-	-	O	O	P	P
JBL® AM/FM 6-disc in-dash CD changer with eight speakers	-	-	O	O	P	P

\*This vehicle eBrochure is designed to identify vehicles commonly available in your area. If you would prefer to purchase a vehicle with no options or additional options, please contact your local dealer to check for current availability or the possibility of placing an order for such a vehicle.



<b>Standard Features and Options*</b> S = Standard O = Optional P = Part of Package	<b>CE 5-Speed Manual (1801)</b>	<b>CE 4-Speed Auto (1802)</b>	<b>S 5-Speed Manual (1811)</b>	<b>S 4-Speed Auto (1812)</b>	<b>LE 5-Speed Manual (1821)</b>	<b>LE 4-Speed Auto (1822)</b>
Chrome-accented door handles, gauges, shift lever and shift surround	-	-	S	S	-	-
Day/night rearview mirror	S	S	-	-	-	-
Day/night rearview mirror with mounted maplights[7]	-	-	S	S	S	S
Power door locks with shift-activated locking feature[9]	P	P	O	O	O	O
Power windows with driver-side auto-down feature	P	P	P	P	S	S
Covered center console with storage	S	S	S	S	S	S
Cup holders (two front and two rear)	S	S	S	S	S	S
Fabric-trimmed 4-way adjustable front seats	S	S	S	S	S	S
Driver's seat height adjuster	S	S	S	S	S	S
60/40 split fold-down rear bench seat	S	S	S	S	S	S
Wood-grain-style interior trim	-	-	-	-	S	S
Two 12V auxiliary power outlets	S	S	S	S	S	S
Heavy-duty electric rear window defogger	S	S	S	S	S	S
Remote trunk release with cancel feature	S	S	P	P	S	S
Remote fuel-filler door and hood releases	S	S	S	S	S	S
Trunk lamp	S	S	S	S	S	S
Remote keyless entry system with lock, unlock and panic features	-	-	P	P	S	S
Needle-punch carpeting	S	S	S	S	S	S
<b>SAFETY</b>						
Vehicle Stability Control (VSC)[1], [2] with Traction Control (TRAC) and brake assist[3]	-	-	O	O	O	O

\*This vehicle eBrochure is designed to identify vehicles commonly available in your area. If you would prefer to purchase a vehicle with no options or additional options, please contact your local dealer to check for current availability or the possibility of placing an order for such a vehicle.





<b>Standard Features and Options*</b> S = Standard O = Optional P = Part of Package	CE 5-Speed Manual (1801)	CE 4-Speed Auto (1802)	S 5-Speed Manual (1811)	S 4-Speed Auto (1812)	LE 5-Speed Manual (1821)	LE 4-Speed Auto (1822)
4-wheel Anti-lock Brake System (ABS) and Electronic Brake-force Distribution (EBD)	O	O	O	O	O	O
Direct Tire Pressure Monitor System (TPMS)[4]	S	S	S	S	S	S
Front and rear energy-absorbing crumple zones	S	S	S	S	S	S
Daytime Running Lights (DRL) with auto on/off feature	S	S	S	S	S	S
Front seatbelt pretensioners with force limiters	S	S	S	S	S	S
Driver and front passenger 3-point seatbelts with adjustable shoulder anchors	S	S	S	S	S	S
3-point rear seatbelts for all rear positions	S	S	S	S	S	S
Automatic/Emergency Locking Retractors (ALR/ELR) for all front and rear passenger seatbelts, Emergency Locking Retractor (ELR) for driver's seatbelt	S	S	S	S	S	S
Driver front airbag and front passenger airbag with advanced airbag system[5]	S	S	S	S	S	S
Driver and front passenger front seat-mounted side airbags and front and rear side curtain airbags[5]	O	O	O	O	O	O
Side-impact door beams	S	S	S	S	S	S
Energy-absorbing steering column	S	S	S	S	S	S
Head-impact protection structure	S	S	S	S	S	S
Child Restraint System (CRS) lower anchors and top tether anchors (LATCH)	S	S	S	S	S	S
Child-protector rear door locks	S	S	S	S	S	S
Trunk-entrapment release	S	S	S	S	S	S
Anti-theft system with engine immobilizer	S	S	S	S	S	S

\*This vehicle eBrochure is designed to identify vehicles commonly available in your area. If you would prefer to purchase a vehicle with no options or additional options, please contact your local dealer to check for current availability or the possibility of placing an order for such a vehicle.

**COROLLA 08**



<b>Standard Features and Options*</b> S = Standard O = Optional P = Part of Package	<b>CE 5-Speed Manual (1801)</b>	<b>CE 4-Speed Auto (1802)</b>	<b>S 5-Speed Manual (1811)</b>	<b>S 4-Speed Auto (1812)</b>	<b>LE 5-Speed Manual (1821)</b>	<b>LE 4-Speed Auto (1822)</b>
Center high-mount stop lamp (CHMSL)	S	S	S	S	S	S
High-tensile-strength steel body panels	S	S	S	S	S	S

امداد خودرو فارما

تلفن شبانه روزی: ۰۲۱-۸۸۸۶۲۰۸۵

FarmaSOS.com

\*This vehicle eBrochure is designed to identify vehicles commonly available in your area. If you would prefer to purchase a vehicle with no options or additional options, please contact your local dealer to check for current availability or the possibility of placing an order for such a vehicle.



## Options\*

## CE Packages and Options

**All-Weather guard package:**

- Windshield molding
- Anti-chipping tape
- Heavy duty heater
- Rear heater duct

**Convenience Package:**

- Cruise control
- Power door locks [9]

**Upgrade Package:**

- Power windows
- Power door locks [9]

**4-wheel Anti-lock Brake System (ABS) with Electronic Brake-force Distribution (EBD)****Driver and front passenger front seat-mounted side airbags and front and rear side curtain airbags [5]****Cruise control**

## S Packages and Options

**All-Weather Guard Package:**

- Windshield molding
- Anti-chipping tape
- Heavy duty heater
- Rear heater duct

**Enhanced Power Package:**

- Power windows
- Remote keyless entry system
- Cruise control

**Extra Value Package #1:**

- Power windows
- Remote keyless entry system
- Cruise control
- 15-in. alloy wheels with P195/65R15 tires
- Color-keyed rear deck spoiler

\*This vehicle eBrochure is designed to identify vehicles commonly available in your area. If you would prefer to purchase a vehicle with no options or additional options, please contact your local dealer to check for current availability or the possibility of placing an order for such a vehicle.



**Sport Plus Package:**

- 15-in. alloy wheels with P195/65R15 tires
- Color-keyed rear deck spoiler

**4-wheel Anti-lock Brake System (ABS)** with Electronic Brake-force Distribution (EBD)

**Vehicle Stability Control (VSC)** [1, 2] with Traction Control (TRAC) and Brake Assist [3]

**Driver and front passenger front seat-mounted side airbags and front and rear side curtain airbags** [5]

**Power tilt/slide moonroof** with sunshade [7]

**AM/FM 6-disc in-dash CD changer** with six speakers

**JBL® AM/FM 6-disc in-dash CD changer** with eight speakers

**16-in. alloy wheels** [6] with P195/55R16 tires

## LE Packages and Options

**All-weather guard package:**

- Windshield molding
- Anti-chipping tape
- Heavy duty heater
- Rear heater duct

**Audio Value Package:**

- AM/FM 6-disc in-dash CD changer with six speakers
- Cruise control

**JBL® Value Package:**

- JBL® AM/FM 6-disc in-dash CD changer with eight speakers
- Cruise control

**4-wheel Anti-lock Brake System (ABS)** with Electronic Brake-force Distribution (EBD)

**Vehicle Stability Control (VSC)** [1, 2] with Traction Control (TRAC) and Brake Assist [3]

**Driver and front passenger front seat-mounted side airbags and front and rear side curtain airbags** [5]

**Power tilt/slide moonroof** with sunshade [7]

**15-in. alloy wheels** with P195/65R15 tires

\*This vehicle eBrochure is designed to identify vehicles commonly available in your area. If you would prefer to purchase a vehicle with no options or additional options, please contact your local dealer to check for current availability or the possibility of placing an order for such a vehicle.

**COROLLA 08**



**TOYOTA**  
moving forward

**ACCESSORIES - EXTERIOR**



**Alloy Wheel Locks**

**\$65.00**

\*Installed MSRP



**Exhaust Tip**

**by Valor Manufacturing**

**\$64.00**

\*Installed MSRP



**Front End Mask**

**\$88.00**

\*\*Parts Only MSRP



**Rear Spoiler**

**\$425.00**

\*Installed MSRP

**These exterior accessories are also available:**

- TRD Sport Muffler\*\*

امداد خودرو فارما

\* Installed MSRP is the Manufacturer's Suggest Retail Price for accessories installed by the manufacturer.

Actual prices for dealer installed accessories may vary. Please see your local Toyota dealer for pricing.

\*\* Installation not included. See your local dealer for installed pricing.

\*\*\*Please see the TRD Catalog or visit [www.trdusa.com](http://www.trdusa.com) for complete warranty information.

تلفن شبانه روزی: ۰۲۱-۸۵۲۰۱۶۲

**FarmaSOS.com**



## ACCESSORIES - INTERIOR



### All Weather Mats

\$99.00

\*\*Parts Only MSRP



### Ashtray Cup

\$18.00

\*\*Parts Only MSRP



### Cargo Mat

\$81.00

\*Installed MSRP



### Cargo Net

\$49.00

\*Installed MSRP



### Cargo Tote

\$40.00

\*Installed MSRP



### Carpet Floor Mats (4pc. set)

\$90.00

\*Installed MSRP



### Carpet Floor Mats/ Cargo Mat Set (5pc. set)

\$171.00

\*Installed MSRP



### Door Sill Enhancements

\$159.00

\*Installed MSRP



### Emergency Assistance Kit

\$70.00

\*Installed MSRP



### First Aid Kit

\$29.00

\*Installed MSRP



### Preferred Accessory Package

\$220.00

\*Installed MSRP



### Shifter Knobs by OBX Racing

Chrome or Titanium \$49.00\*

Blue or Red \$42.00\*\*

\*Installed MSRP

\*\*Parts Only MSRP

\* Installed MSRP is the Manufacturer's Suggest Retail Price for accessories installed by the manufacturer. Actual prices for dealer installed accessories may vary. Please see your local Toyota dealer for pricing.

\*\* Installation not included. See your local dealer for installed pricing.

**COROLLA 08**



**TOYOTA**  
moving forward

**ACCESSORIES - INTERIOR**



**Sport Pedal Covers  
by OBX Racing Sports**  
Silver Finish - \$79.00

\*Installed MSRP



**VIP Security System**  
RS3200 Plus - \$359.00

\*Installed MSRP



**Xtreme Cargo Mat**  
\$79.00

\*\*Parts Only MSRP

These interior accessories are also available:

- Molded Dash Applique, Simulated Blackwood Dash

امداد خودرو فارما

\* Installed MSRP is the Manufacturer's Suggest Retail Price for accessories installed by the manufacturer. Actual prices for dealer installed accessories may vary. Please see your local Toyota dealer for pricing.

\*\* Installation not included. See your local dealer for installed pricing.

تلفن شبانه روزی: ۰۲۱-۸۸۶۲۰۸۵

**FarmaSOS.com**



Specifications	CE 5-Speed Manual (1801)	CE 4-Speed Auto (1802)	S 5-Speed Manual (1811)	S 4-Speed Auto (1812)	LE 5-Speed Manual (1821)	LE 4-Speed Auto (1822)
<b>Mechanical/Performance</b>						
Engine	1.8-liter DOHC 16-valve VVT-i 4-cylinder 126 hp @ 6000 rpm; 122 lb.-ft. @ 4200 rpm					
Transmission	5-speed manual overdrive	4-speed electronically controlled automatic overdrive (ECT)	5-speed manual overdrive	4-speed electronically controlled automatic overdrive (ECT)	5-speed manual overdrive	4-speed electronically controlled automatic overdrive (ECT)
Body construction	Unitized body					
Drivetrain	Front engine, front-wheel drive					
Suspension	Independent MacPherson strut front, torsion beam rear suspension with front and rear stabilizer bars					
Steering	Engine speed-sensing power-assisted rack-and-pinion					
Turning circle diameter, curb to curb (ft.)	36.1					
Brakes	Power-assisted ventilated front disc/rear drum					
4-wheel Anti-lock Brake System (ABS) with Electronic Brake-force Distribution (EBD)	Available					
Vehicle Stability Control (VSC) [1,2] with Traction Control (TRAC) and Brake Assist [3]	NA		Available			
<b>Exterior Dimensions (in.)</b>						
Overall height	58.5					
Overall width	66.9					

# COROLLA 08



Specifications	CE 5-Speed Manual (1801)	CE 4-Speed Auto (1802)	S 5-Speed Manual (1811)	S 4-Speed Auto (1812)	LE 5-Speed Manual (1821)	LE 4-Speed Auto (1822)
Overall length	178.3					
Wheelbase	102.4					
Track (front/rear)	58.3/57.5					
Minimum running ground clearance	5.7					
<b>Interior Dimensions front/rear (in.)</b>						
Head room (with moonroof)	39.3/37.1		39.3/37.1 (37.8/37.0)			
Shoulder room	53.1/53.5					
Hip room	51.9/46.2					
Leg room	41.3/35.4					
Seating capacity	5					
<b>Weights and Capacities</b>						
Curb weight (lb.)	2530	2595	2550	2615	2550	2615
EPA passenger volume (cu. ft.)	90.3		90.3/88.5 [11]			
Luggage capacity (cu. ft.)	13.6					
Towing capacity (lb.) [10]	1500					
Fuel tank (gal.)	13.2					
<b>Tires</b>						
Size -- Standard	P185/65R15		P195/65R15			
Size -- Available	NA		P195/55R16 [6,12]		NA	



# COROLLA 08



Specifications	CE 5-Speed Manual (1801)	CE 4-Speed Auto (1802)	S 5-Speed Manual (1811)	S 4-Speed Auto (1812)	LE 5-Speed Manual (1821)	LE 4-Speed Auto (1822)
Type -- Standard	All-Season					
Type -- Available	NA		Performance [6,12]		NA	
Spare	Temporary					
<b>Mileage Estimates (mpg city/highway)</b>						
Miles Per Gallon [13]	28/37	26/35	28/37	26/35	28/37	26/35

امداد خودرو فارما

تلفن شبانه روزی: ۰۲۱-۸۸۶۲۰۸۵

FarmaSOS.com



## Warranties

**Basic:** 36 months/36,000 miles (all components other than normal wear and maintenance items).

**Powertrain:** 60 months/60,000 miles (engine, transmission/transaxle, front-wheel drive, rear-wheel drive, seatbelts and airbags).

**Rust-Through:** 60 months/unlimited miles (corrosion perforation of sheet metal).

**Federal Emission Coverage:** Components under the federal emission defect warranty are covered for 36 months/36,000 miles and specified major emission control components are covered for 8 years/80,000 miles. Specified major emission control components under emission performance warranty are also covered for 8 years/80,000 miles. In addition, emission performance warranty is applicable for 24 months/24,000 miles in states and local jurisdictions that require a periodic EPA-approved inspection and maintenance program.

**California Emission Control Coverage:** In California and any other state that adopts California emission warranty provisions, performance warranty and defect warranty coverage is applicable for 36 months/50,000 miles, and specific control devices are covered for 7 years/70,000 miles.

**Accessories:** Warranty coverage is for 12 months, regardless of mileage. If the part or accessory is installed during the New Vehicle Limited Warranty period, coverage is for 12 months or the remainder of the applicable warranty coverage, whichever is greater, with the exception of car covers, which are covered for 12 months only.

You may be eligible for transportation assistance if it's necessary that your vehicle be kept overnight for repairs covered under warranty. Please see your authorized Toyota dealership for further details.

For complete details about Toyota's warranties, please visit [www.toyota.com](http://www.toyota.com), refer to the applicable Owner's Warranty Information booklet or see your Toyota dealer.

In addition, there may be times when we will establish a special policy adjustment that will further defray repair costs. For details about the new vehicle limited warranty, see your Toyota dealer. And for complete details of Toyota's warranties, please refer to your Owner's Warranty.

## Disclaimers

All information in this eBrochure is based on data available at time of posting, is subject to change without notice and pertains specifically to continental U.S.A vehicles only.

[1] Vehicle Stability Control (VSC) is an electronic system designed to help the driver maintain vehicle control under adverse conditions. It is not a substitute for safe driving practices. Factors including speed, road conditions and driver steering input can all affect whether VSC will be effective in preventing a loss of control. Please see your Owner's Manual for further details.

[2] Requires ABS. Available with automatic transmission only.

[3] Brake Assist is designed to help the driver take full advantage of the benefits of ABS. It is not a substitute for safe driving practices. Braking effectiveness also depends on proper brake-system maintenance and tire and road conditions.

[4] The Toyota Direct Tire Pressure Monitor alerts the driver when tire pressure is critically low. For optimal tire wear and performance, tire pressure should be checked regularly with a gauge; do not rely solely on the monitor system. See your Owner's Manual for details.

[5] All the airbag (AB) systems are Supplemental Restraint Systems. All ABs (if installed) are designed to inflate only under certain conditions and in certain types of severe collisions: frontal and knee ABs typically inflate in frontal collisions; side and side curtain ABs in side collisions; Roll-Sensing Curtain ABs at a severe tilt degree, roll or lateral G-force. In all other accidents, the ABs will not inflate. To decrease the risk of injury from an inflating AB, always wear seatbelts, sit upright in the middle of the seat as far back as possible and do not lean against the door. Do not put objects in front of an AB or around the seatback. Do not use a rearward-facing child seat in any front passenger seat. The force of an inflating AB may cause serious injury or death. See your Owner's Manual for further information/warnings.

[6] 16-in. alloy wheels with P195/55R16 performance tires are expected to experience greater tire wear than conventional tires. Tire life may be less than 24,000 miles, depending upon driving conditions.

[7] On models equipped with available moonroof, maplights are located in the overhead console.

[8] Leather-wrapped shift knob with automatic transmission only.

[9] Shift-activated locking feature standard with automatic transmission, not available with manual transmission.

[10] Before towing, confirm your vehicle and trailer are compatible, hooked up and loaded properly and that you have any necessary additional equipment. Do not exceed any Weight Ratings and follow all instructions in your Owner's Manual. The maximum you can tow depends on the total weight of any cargo, occupants and available equipment.

[11] With available power moonroof.

[12] Requires available 16-in. alloy wheels.

[13] 2008 EPA-estimated mileage. For Model Year 2008, the EPA has revised the way the estimated fuel economy rating is determined. Actual mileage will vary.