

# Yaris 2011



تلفن شبانه روزی: ۰۸۸۶۲۰۸۵

Farmag.com

Welcome  
to Yaris.



### 3-Door Liftback

Shown in Super White with available Sport Package, 15-in. alloy wheels,<sup>1</sup> TRD sport muffler and TRD lowering springs and shocks.

امداد خودرو فارما

تلفن شبانه روزی: ۰۸۵ ۴۲۰۸۵

FarmaSOS.com

1. Requires Power or Sport Package.

# Break the mold.. Not the bank.



With Yaris' EPA-estimated 36 highway mpg rating<sup>1</sup> and affordable price, you can leave your money in your pocket and your tired old notion of subcompact cars far behind. On the outside, Yaris is all slick sheet metal and bold design. This looks like the car you wanted to buy — not the one you had to. On the inside, there's a surprisingly spacious interior, full of unexpected amenities like an available reclining rear seat<sup>2</sup> and MP3-ready auxiliary audio jack. And on the road, you'll find Yaris has remarkably responsive handling that makes it a blast to drive. Best of all, you can get all this good stuff three ways: 3-Door Liftback, 5-Door Liftback or Sedan. That's what happens when you think outside the econobox. **The 2011 Toyota Yaris. Moving Forward.**

تلفن شبانه زوری ۰۲۱ ۸۸۶۲۰۸۵  
FairmasOS.com

## Sedan

Shown in Pacific Blue Metallic with available Sport Package and 15-in. alloy wheels<sup>3</sup>



1. 2011 EPA-estimated mileage with manual transmission. Actual mileage will vary. 2. Liftback models only. 3. Requires Power or Sport Package.

## Star Safety System™

Every 2011 Yaris comes standard with the Star Safety System.™ A set of six accident avoidance technologies designed to help keep drivers out of harm's way, the Star Safety System™ includes Vehicle Stability Control (VSC),<sup>1</sup> Traction Control (TRAC), Anti-lock Brake System (ABS), Electronic Brake-force Distribution (EBD), Brake Assist (BA)<sup>2</sup> and Smart Stop Technology (SST).<sup>3</sup> To view videos of Star Safety System™ features, visit [toyota.com/safety](http://toyota.com/safety)

**STAR**<sup>™</sup>  
SAFETY SYSTEM

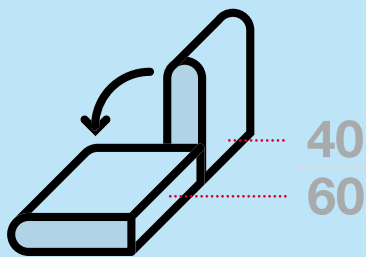
امداد خودرو فارما

### 5-Door Liftback

Shown in Meteorite Metallic with available Power Package and 15-in. alloy wheels.<sup>4</sup>



1. See footnote 15 in Disclaimers section. 2. See footnote 6 in Disclaimers section. 3. See footnote 16 in Disclaimers section. 4. Requires Power or Sport Package.



### 60/40 rear seat

Split it. Recline it. Slide it. Fold it. Whatever you need Yaris Liftback's available 60/40 rear seat to do, consider it done.



### Auxiliary audio jack

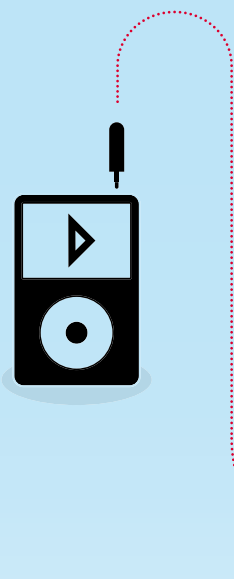
Yaris knows jack. Its available auxiliary audio jack means Yaris is ready to play whatever's on your MP3 player.



iPod® accessory not included.  
iPod® is a registered trademark of Apple, Inc. All rights reserved.

### Convenient storage

Let Yaris Liftback show you where to put it. Because of the center-mounted instrument cluster, you'll find cubbyholes and compartments of all kinds in here, including passenger-side dual glove compartments and a large driver-side glove compartment...directly in front of the driver, duh. Who's calling you disorganized now?



امداد خودرو فارس  
تلفن شبانه روزی: ۰۲۱-۸۸۶۲۰۸۵  
FarmaSOS.com



Sedan interior shown in Dark Charcoal with available Sport Package and available 4-speed automatic transmission.

### Roomy cabin

Yaris looks so streamlined on the outside that you might be surprised how spacious it is on the inside. All three models seat five comfortably, with plenty of leg room and head room. You'll find convenient storage compartments throughout the cabin, and there's an available 60/40 rear seat that splits, reclines, slides<sup>1</sup> and folds. And both the 3-Door Liftback and the 5-Door Liftback give you up to 25.7 cubic feet of cargo space<sup>2,3</sup>. You don't even want to know how much an apartment this size in Manhattan would cost.



### Lights

Light up the inside with an available interior lighting kit accessory that gives you just enough glow to make passengers say "OMG!"



1. Liftback models only. 2. 25.7 cu. ft. with rear seat folded forward. 3. Cargo and load capacity limited by weight and distribution.



5-Door Liftback interior shown in Dark Charcoal with available Sport Package, 4-speed automatic transmission, accessory armrest, sport pedals and floor mats!

### Interior innovations

For starters, check out the center-mounted instrument panel. We put it in the middle of the dash, so the driver has a better view of the road. It also means an unobstructed view of the available Optitron meters. As well, you'll notice handy center and side-console storage compartments. Clearly, there's a lot worth looking at inside Yaris.



### Doorsill enhancements

An available aluminum trim piece accessory, silk-screened with the Yaris name, protects the car's doorsills from everyday scuffs and scrapes.



1. See footnote 19 in Disclaimers section.

LIFTBACK



Black Sand Pearl



Bayou Blue Pearl



Blazing Blue Pearl



Fabric in Dark Charcoal



Available sport fabric in Dark Charcoal<sup>1</sup>



Absolutely Red



Meteorite Metallic



Super White

SEDAN



Black Sand Pearl



Pacific Blue Metallic



Barcelona Red Metallic



Fabric in Dark Charcoal



Fabric in Bisque



Flint Mica<sup>2</sup>



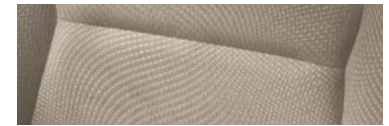
Silver Streak Mica<sup>2</sup>



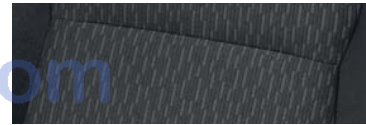
Polar White



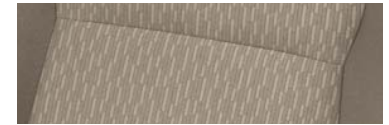
Available upgraded fabric in Dark Charcoal<sup>3</sup>



Available upgraded fabric in Bisque<sup>3</sup>



Available sport fabric in Dark Charcoal<sup>1</sup>



Available sport fabric in Bisque<sup>1</sup>

FarmaSOS.com

WHEELS



Standard 14-in. steel wheel with full wheel cover



Available 15-in. steel wheel with full wheel cover<sup>1</sup>



Available 15-in. steel wheel with full wheel cover<sup>4</sup>



Available 15-in. alloy wheel<sup>5</sup>



## Specifications

MECHANICAL AND PERFORMANCE	3-DOOR LIFTBACK	5-DOOR LIFTBACK	SEDAN
Engine 1.5-Liter DOHC 16-Valve Variable Valve Timing with intelligence (VVT-i) 4-Cylinder; 106 hp @ 6000 rpm; 103 lb.-ft. @ 4200 rpm	Standard	Standard	Standard
Ignition	Electronic, with Toyota Direct Ignition (TDI)		
Emission rating	Ultra Low Emission Vehicle II (ULEV-II)		
Transmission 5-speed manual 4-speed Electronically Controlled automatic Transmission (ECT)	Standard Available	Standard Available	Standard Available
Drivetrain	Front-wheel drive (FWD)		
Body construction	Unitized body		
Suspension	Independent MacPherson strut front, torsion beam rear suspension and front stabilizer bar		
Steering	Electric Power Steering (EPS); power-assisted rack-and-pinion		
Turning circle diameter, curb to curb (ft.)	30.8	30.8	32.6
Brakes	Power-assisted ventilated front disc/rear drum with Anti-lock Brake System (ABS), Electronic Brake-force Distribution (EBD) and Brake Assist (BA) <sup>6</sup>		
<b>EXTERIOR DIMENSIONS (in.)</b>			
Height	60.0	60.0	57.5
Width	66.7	66.7	66.5
Length	150.6	150.6	169.3
Wheelbase	96.9	96.9	100.4
Track (front/rear)	58.3/57.9	58.3/57.9	57.9/57.5
Ground clearance	5.5	5.5	5.8
<b>INTERIOR DIMENSIONS front/rear (in.)</b>			
Head room	39.4/37.9	39.4/37.9	38.8/36.7
Shoulder room	51.4/50.4	51.4/50.4	51.6/50.2
Hip room	50.0/46.7	50.0/46.7	49.8/50.1
Leg room	40.3/33.8	40.3/33.8	42.2/35.6
Seating capacity	5	5	5
<b>CAPACITIES</b>			
Curb weight (lb.) manual/automatic	2311/2355	2320/2364	2313/2346
EPA passenger volume (cu. ft.)	84.6	84.6	87.1
Luggage capacity (cu. ft.)	9.32 <sup>7</sup>	9.32 <sup>7</sup>	12.9 <sup>8</sup>
Fuel tank (gal.)	11.1	11.1	11.1
<b>TIRES</b>			
Size P175/65R14 P185/60R15	Standard Available <sup>5</sup>	Standard Available <sup>5</sup>	Standard Available <sup>5</sup>
Type	All-Season	All-Season	All-Season
Spare	Temporary	Temporary	Temporary
<b>MILEAGE ESTIMATES (mpg city/highway)<sup>9</sup></b>			
Manual	29/36	29/36	29/36
Automatic	29/35	29/35	29/35

## Features<sup>10</sup>

	3-DOOR			5-DOOR			SEDAN		
	LIFTBACK	LIFTBACK	LIFTBACK	LIFTBACK	LIFTBACK	LIFTBACK	LIFTBACK	LIFTBACK	LIFTBACK
<b>EXTERIOR</b>									
Multi-reflector halogen headlamps	S	S	S	15-in. steel wheels with full wheel covers and P185/60R15 tires	P	P	P		
Integrated fog lamps	O <sup>9</sup> /P	O <sup>9</sup> /P	O <sup>9</sup> /P	15-in. alloy wheels with P185/60R15 tires	O <sup>9</sup>	O <sup>9</sup>	O <sup>9</sup>		
Color-keyed front and rear underbody spoilers, side rocker panels, rear spoiler and unique S badge	P	P	P	Intermittent windshield wipers	S	S	S		
Color-keyed grille surround	—	—	S	Rear window wiper	P	P	—		
Color-keyed outside mirrors with folding feature	S	S	S	Rear window defogger	S	S	S		
Color-keyed power outside mirrors with folding feature	P	P	P	Roof-mounted AM/FM antenna	S	S	—		
Color-keyed outside door handles	S	S	S	In-glass AM/FM antenna	—	—	S		
14-in. steel wheels with full wheel covers and P175/65R14 tires	S	S	S						
<b>INTERIOR</b>									
Air conditioning	S	S	S	Optitron instrumentation with speedometer, tachometer, LCD odometer, twin tripmeters and fuel gauge	P	P	P		
Audio prep package with four speakers	S	S	S	Warning lights: airbag, <sup>14</sup> seatbelt, low fuel level, door-ajar, battery, check engine, oil, brake, Vehicle Stability Control (VSC), <sup>15</sup> Traction Control (TRAC), Anti-lock Brake System (ABS), Tire Pressure Monitor System (TPMS) <sup>16</sup> and scheduled maintenance	S	S	S		
AM/FM CD player with MP3/WMA playback capability, four speakers, XM compatible <sup>11</sup> (additional hardware and subscription required), auxiliary audio jack and CD text display function	P	P	P	Leather-trimmed shift lever	P	P	P		
AM/FM CD player with MP3/WMA playback capability, four speakers, XM compatible <sup>11</sup> (additional hardware and subscription required), auxiliary audio jack, CD text display function, iPod <sup>®12</sup> interface and auto sound leveling	P	P	P	Remote keyless entry system with lock, unlock and panic function	P	P	P		
Integrated audio face plate and auto sound leveling	—	—	P	Power windows with driver-side auto down	P	P	P		
Fabric-trimmed 4-way adjustable driver's seat; 4-way adjustable passenger seat with seatback pockets	S	S	—	Power door locks	P	P	P		
Fabric-trimmed 6-way adjustable driver's seat; 4-way adjustable passenger seat with seatback pockets	—	—	S	Covered center console with storage compartment	—	—	S		
Driver and front passenger sport seats with sport fabric	P	P	P	Driver-side glove compartment	S	S	—		
Fold-down rear bench seat	S	S	—	Passenger-side dual glove compartments	S	S	—		
60/40 split fold-down rear seat	—	—	P	Cargo area under-floor storage	S	S	—		
60/40 split, reclining, sliding, fold-flat rear seat	—	—	P	Liftback luggage cover	S	S	—		
Cruise control	O <sup>5</sup>	O <sup>5</sup>	O <sup>5</sup>	One 12V auxiliary power outlet	S	S	S		
Tilt 3-spoke steering wheel	S	S	S	Digital clock	S	S	S		
Leather-trimmed steering wheel	P	P	P	Maplamp	S	S	S		
Analog instrumentation with speedometer, LCD odometer, twin tripmeters and fuel gauge	S	S	—	Dual sun visors with vanity mirrors	—	—	S		
Analog instrumentation with speedometer, tachometer, LCD odometer, twin tripmeters and fuel gauge	S <sup>13</sup>	S <sup>13</sup>	S	Dual extendable sun visors with vanity mirrors	S	S	—		
				Trunk lamp	S	S	—		
				Two front cup holders and one rear cup holder	S	S	S		
				Remote trunk release	—	—	S		
				Remote hood and fuel-filler door releases	S	S	S		
<b>SAFETY AND CONVENIENCE</b>									
<b>STAR SAFETY SYSTEM</b> — includes Vehicle Stability Control (VSC), <sup>15</sup> Traction Control (TRAC), Anti-lock Brake System (ABS), Electronic Brake-force Distribution (EBD), Brake Assist (BA) <sup>6</sup> and Smart Stop Technology (SST) <sup>16</sup>	S	S	S	Child-protector rear door locks	—	S	S		
Driver and front passenger Advanced Airbag System <sup>14</sup>	S	S	S	Energy-absorbing collapsible steering column	S	S	S		
Driver and front passenger front seat-mounted side airbags and front and rear side curtain airbags <sup>14</sup>	S	S	S	Front and rear energy-absorbing crumple zones	S	S	S		
Front seatbelt pretensioners with force limiters	S	S	S	Side-impact door beams	S	S	S		
3-point seatbelts for all seating positions; driver-side Emergency Locking Retractor (ELR) and Automatic/Emergency Locking Retractor (ALR/ELR) on all passenger belts	S	S	S	Energy-dissipating upper interior trim	S	S	S		
Adjustable front shoulder anchors	—	S	S	High-tensile-strength steel body panels	S	S	S		
LATCH (Lower Anchors and Tethers for CHildren) for outboard rear seating positions only	S	S	S	Tire Pressure Monitor System (TPMS) <sup>17</sup>	S	S	S		
				Internal trunk release	—	—	S		
				Engine immobilizer <sup>18</sup>	P	P	P		

S = Standard O = Optional -- = Not Available P = Feature is available as part of an option package.

See numbered footnotes in Disclaimers section.

## PACKAGES AND OPTIONS

**All-Weather Guard Package** — larger window washer tank with low-level warning lamp, heavy-duty heater, heavy-duty starter and rear heater duct

**Convenience Package** — AM/FM CD player with MP3/WMA playback capability, four speakers, XM compatible<sup>11</sup> (additional hardware and subscription required), auxiliary audio jack, CD text display function, 60/40 split fold-down rear seat (Liftback adds reclining, sliding, fold-flat function) and 15-in. steel wheels with full wheel covers (Liftback adds rear window wiper)

**Power Package** — includes Convenience Package plus power door locks and power windows with driver-side auto down, color-keyed power outside mirrors, engine immobilizer<sup>17</sup> and remote keyless entry system with lock, unlock and panic function (Sedan adds integrated audio face plate)

## WARRANTIES

Every Toyota Car, Truck and SUV is built to exceptional standards. And that's not idle boasting. We back it up with these Limited Warranty Coverages:

**Basic:** 36 months/36,000 miles (all components other than normal wear and maintenance items).

**Powertrain:** 60 months/60,000 miles (engine, transmission/transaxle, drive system, seatbelts and airbags).

**Rust-Through:** 60 months/unlimited miles (corrosion perforation of sheet metal).

**Emissions:** Coverages vary under Federal and California regulations. Refer to applicable *Warranty and Maintenance Guide* for details.

**Accessories:** For Genuine Toyota accessories purchased at the time of the new vehicle purchase, the Toyota Accessory Warranty coverage is in effect for 36 months/36,000 miles from the vehicle's in-service date, which is the same coverage as the Toyota New Vehicle Limited Warranty.

## TOYOTA CARE



**ToyotaCare**

Covers normal factory scheduled service. Plan is 2 years or 25K miles, whichever comes first. The new Toyota vehicle cannot be part of a rental or commercial fleet, or a livery or taxi vehicle. See plan for complete coverage details. See participating Toyota dealer for details.

## DISCLAIMERS

**1.** Requires Sport Package. **2.** Not available with Bisque fabric. **3.** Requires Power Package. **4.** Requires Convenience or Power Package. **5.** Requires Power or Sport Package. **6.** Brake Assist is designed to help the driver take full advantage of the benefits of ABS. It is not a substitute for safe driving practices. Braking effectiveness also depends on proper brake-system maintenance and tire and road conditions. **7.** 25.7 cu. ft. with rear seat folded forward. **8.** 13.7 cu. ft. with available 60/40 split fold-down rear seat. **9.** 2011 EPA-estimated mileage. Actual mileage will vary. **10.** Toyota strives to build vehicles to match customer interest and thus they typically are built with popular options and option packages. Not all options/packages are available separately, and some may not be available in all regions of the country. See [toyota.com](http://toyota.com) for information about options/packages commonly available in your area. If you would prefer a vehicle without any or with different options, contact your dealer to check for current availability or the possibility of placing a special order. **11.** XM services require a subscription after 90-day trial period. Subscriptions governed by XM Customer Agreement available at [xmradio.com](http://xmradio.com). **If you decide to continue your XM service at the end of your complimentary trial, the plan you choose will automatically renew and bill at then-current rates unless you call 1-800-967-2346 to cancel.** Fees and programming subject to change. Available only to those at least 18 years of age in the 48 contiguous United States and D.C. **12.** iPod® is a registered trademark of Apple, Inc. All rights reserved. **13.** Manual transmission only. **14.** All the airbag (AB) systems are Supplemental Restraint Systems. All ABs (if installed) are designed to inflate only under certain conditions and in certain types of severe collisions: frontal and knee ABs typically inflate in frontal collisions; side and side curtain ABs in side collisions; Roll-Sensing Curtain ABs at a severe tilt degree, roll or lateral G-force. In all other accidents, the ABs will not inflate. To decrease the risk of injury from an inflating AB, always wear seatbelts, sit upright in the middle of the seat as far back as possible and do not lean against the door. Do not put objects in front of an AB or around the seatback. Do not use a rearward-facing child seat in any front passenger seat. The force of an inflating AB may cause serious injury or death. See your *Owner's Manual* for further information/warnings. **15.** Vehicle Stability Control (VSC) is an electronic system designed to help the driver maintain vehicle control under adverse conditions. It is not a substitute for safe driving practices. Factors including speed, road conditions and driver steering input can all affect whether VSC will be effective in preventing a loss of control. Please see your *Owner's Manual* for further details. **16.** Smart Stop Technology operates only in the event of certain simultaneous brake and gas pedal applications. When engaged, the system will reduce engine power to help the brakes bring the vehicle to a stop. Factors including speed, road conditions and driver input can all impact stopping distance. Smart Stop Technology is not a substitute for safe and attentive driving and does not guarantee instant stopping. Please see your *Owner's Manual* for further details. **17.** The Toyota Tire Pressure Monitor alerts the driver when tire pressure is critically low. For optimal tire wear and performance, tire pressure should be checked regularly with a gauge; do not rely solely on the monitor system. See your *Owner's Manual* for details. **18.** The engine immobilizer is a state-of-the-art anti-theft system. When you insert your key into the ignition switch, the key transmits an electronic code to the vehicle. The engine will only start if the code in the transponder chip inside the key matches the code in the vehicle's immobilizer. Because the transponder chip is embedded in the key, it can be costly to replace. If you lose a key, your Toyota dealer can help, or you can find a qualified independent locksmith to replace your key or perform high-security key services at [www.aloa.org](http://www.aloa.org) **19.** This floor mat was designed specifically for use in your model and model year vehicle and SHOULD NOT be used in any other vehicle. To avoid potential interference with pedal operation, each mat must be secured with retention hooks/clips. Do not install a floor mat on top of an existing floor mat.

Some vehicles are shown with available equipment. Seatbelts should be worn at all times. For details on vehicle specifications, standard features and available equipment in your area, contact your Toyota dealer. A vehicle with particular equipment may not be available at the dealership. Ask your Toyota dealer to help locate a specifically equipped vehicle.

**Sport Package** — includes Power Package plus color-keyed front and rear underbody spoilers, side rocker panels, rear spoiler and unique S badge, integrated fog lamps, iPod<sup>®12</sup> interface, auto sound leveling, driver and front passenger sport seats with sport fabric, leather-trimmed steering wheel and shift lever, and Optitron instrumentation with speedometer, tachometer, LCD odometer, twin tripmeters and fuel gauge

Cruise control<sup>5</sup>

Integrated front fog lamps<sup>3</sup>

15-in. alloy wheels with P185/60R15 tires<sup>5</sup>

For Genuine Toyota accessories purchased after the new vehicle purchase the coverage is 12 months, regardless of mileage, from the date the accessory was installed on the vehicle, or the remainder of any applicable new vehicle warranty, whichever provides greater coverage, with the exception of car covers. Car covers are warranted for 12 months from the date of purchase and do not assume any coverage under the Toyota New Vehicle Limited Warranty.

You may be eligible for transportation assistance if it's necessary that your vehicle be kept overnight for repairs covered under warranty. Please see your authorized Toyota dealership for further details.

For complete details about Toyota's warranties, please visit [www.toyota.com](http://www.toyota.com), refer to the applicable *Warranty and Maintenance Guide* or see your Toyota dealer.



For Toyota Mobility program details, go to [www.toyota.com/mobility](http://www.toyota.com/mobility) or call the Toyota Customer Assistance Center at 1-800-331-4331

All information presented herein is based on data available at the time of posting, is subject to change without notice and pertains specifically to mainland U.S.A. vehicles only. Prototypes shown. Actual production vehicles may vary.